

# NATIONAL SCHOOL OF NURSING & MIDWIFERY THE UNIVERSITY OF NOTRE DAME AUSTRALIA



## Annual Research Report 2022 – 2023

# FOREWORD

***Professor Karen Clark Burg, National Head of School***

***Professor Caroline Bulsara, National Postgraduate Research Coordinator***

The growth in the research space within the School of Nursing & Midwifery in 2022 – 2023 has been exciting to watch. The report is testament to the diversity of research achievements from staff across the school in the past two years and the growth in partnerships with key organisations. Furthermore, it is encouraging to see the number of staff having research successes which adhere to the vision of the University of Notre Dame Australia for nurturing a thriving research culture. The mission statement for the university research strategy (2024 – 2027) is as follows:

*“Transformative Research that addresses real world challenges,  
improves the lives of people in our communities and impacts  
society for the common good.”*

We hope that the outputs, achievements, and awards contained in this report showcase an enthusiastic and relevant approach to research activities within the School which align with the new university wide research plan.

# Contents

FOREWORD .....	ii
HIGHLIGHTS .....	1
2022 – 2023 at a Glance.....	1
Strategic priorities for the 2024 University of Notre Dame Research Strategy.....	1
Publications in focus .....	2
GRANTS .....	3
Grants Awarded (current).....	3
Grants Submitted.....	4
PUBLICATIONS.....	6
Peer Reviewed Articles .....	6
Books and Book Chapters .....	13
PRESENTATIONS.....	14
Keynote Speaker .....	14
Conference Publications (full paper-refereed) .....	14
Conference Presentations (not peer-refereed) .....	15
AWARDS.....	18
COMMITTEE MEMBERSHIPS & OTHER RESEARCH ACTIVITIES .....	20
RESEARCH STUDENTS .....	22
HDR Candidates (under examination as of November 2023).....	22
PhD and Masters by Research Candidates .....	23
APPENDICES .....	26
Appendix A: Revised SoNM Strategic Research Plan [Strategy based on 2020 – 2023].....	26
Appendix B: SoNM Student and Staff Feedback for Research Strategy .....	29
Appendix C: Research Bites.....	38

# HIGHLIGHTS

## 2022 – 2023 at a Glance

### *Strategic priorities for the 2024 University of Notre Dame Research Strategy*




The School of Nursing and Midwifery Research Annual Report 2022-2023 reflects the School's commitment to engaging and addressing the University of Notre Dame Research Strategy (2024 – 2027) with tangible outcomes. During this period, staff and higher degree by research students were actively involved in Research and Learning & Teaching development activities. Key to our further growth and success was with the appointment of two senior academic research active staff (Professor Sadie Geraghty who became the Head of Discipline Midwifery and Professor Vasiliki Betihavas appointed as Deputy Head of School) to our existing research staff. The future research plan for the School has been set and the feedback report as well as strategic forward planning is included at the back of this report in Appendix A and B.

The new Notre Dame Research Strategy is based upon three tenets of exceptional care, good lives, and strong communities.



## Publications in focus

Please find below a selection of publications that align with these three university tenets:

 <p><b>EXCEPTIONAL CARE</b></p> <ul style="list-style-type: none"> <li>Care for all</li> <li>Advancing health care</li> <li>Dignity focus</li> </ul>	<p>Cutler, N., &amp; <b>Goodhew, M.</b> Cultural Considerations in emergency care. In K. Curtis, R. Shadan, M. Fry, &amp; J. Considine (Eds.), <i>Emergency and Trauma Care for Nurses and Paramedics</i> (4th Edition ed.). Elsevier.</p> <p><b>Goodhew, M.</b>, &amp; Robinson, T. (2022). Caring for a person with substance dependence and complex post-traumatic distress syndrome In T. Levett- Jones (Ed.), <i>Clinical reasoning: learning to think like a nurse</i> (3<sup>rd</sup> ed.). Pearson.</p> <p>Phillips, J., <b>Hosie, A.</b> &amp; Davidson, P., ‘Palliative care in the nursing home’, <i>Oxford Textbook of Palliative Medicine</i>, 6th edition, 2022</p>
 <p><b>STRONG COMMUNITIES</b></p> <ul style="list-style-type: none"> <li>Common good</li> <li>Indigenous leadership</li> <li>Global community</li> </ul>	<p><b>Hosie, A.</b>, et al., Older persons' and their caregivers' perspectives and experiences of research participation with impaired decision-making capacity: A scoping review. <i>Gerontologist</i>, 2022. 62(2): p. e112-e122.</p> <p><b>Clark-Burg, K., Bulsara, C., Josif, C.,</b> Morgan, M., Timler, A., <b>Gaspar, J.</b>, &amp; Myers, E. (2022). Caring for elders during COVID-19. <i>KAHRA Connections</i> (22).</p> <p>Kachila, H., <b>Bulsara, C.</b>, Farrant, B. Johnson, A. Michie, C. Pell, C. Health. (2023). Outcomes of children living in out-of-home care in Metropolitan WA: A Sequential Mixed-Methods Study—A Protocol Paper. <i>Children</i>, 10, 566.</p> <p><b>Geraghty, S.</b> (2023). Breast Cancer Awareness and Associated Factors among Students of Allied Health Sciences in Indonesia and Pakistan: A cross-sectional study. <i>Breast Cancer Journal</i>, under Review</p> <p>Ismaila, Y., Bayes, S., &amp; <b>Geraghty, S.</b> (2023). ‘Going off track’: The consequences of barriers to Ghanaian midwives’ ability to provide quality care. <i>Health Care for Women International</i>, under review</p> <p>Kurup, C., <b>Betihavas, V.</b>, Burston, A., &amp; Jacob, E. (2023). Strategies employed by developed countries to facilitate the transition of internationally qualified nurses specialty skills into clinical practice: An integrative review. <i>Nursing Open</i>, Dec;10(12):7528-7543.</p>
 <p><b>GOOD LIVES</b></p> <ul style="list-style-type: none"> <li>Human flourishing</li> <li>Philosophy and theology</li> <li>Holistic education</li> </ul>	<p><b>Dickerson, M. G., Conlon, D., &amp; Raeburn, T.</b> (2022). <i>Ars Moriendi: An Overview of Approaches to the Art of Dying, Grief and Loss for Nurses Working in Mental Health</i>. <i>Issues in Mental Health Nursing</i>, 1-8.</p> <p>Wang, C.C., <b>Geraghty, S.</b>, Fox-Harding, C., &amp; Wang, C. (2022). Effects of a nurse-led, multi-centred community-based Tai Chi program on improving quality of life, physical function, and mental wellbeing of women with breast cancer: protocol for a single-blind, double-armed, randomized controlled trial. <i>Women’s Health</i>, Jan-Dec:18:17455057221127813.</p> <p><b>Raeburn, T.</b>, Bradshaw, J., Best, O., &amp; Cleary, M. (2023). Lunatic Asylums and Indigenous Australians during the Nineteenth Century. <i>Issues in Mental Health Nursing</i>, 1-9.</p> <p>River, J., Bellingham, B., Isobel, S., Gill, K., Boydell, K., Conlon L., <b>Goodhew, M.</b>, Cutler, N., &amp; Kemp, H. A qualitative study of a co-produced model for promoting research partnerships in mental health. <i>International Journal of Qualitative Methods</i>, First published online November 9, 2023</p>

# GRANTS

## Grants Awarded (current)

Karen Clark Burg, Annmarie Hosie, Caroline Bulsara, Mark Goodhew, Gail Ross Adjie, Toby Raeburn, and Sadie Geraghty are lead investigators on several successful grants. These accomplishments are a combination of internal Notre Dame grants and external funding sources.

- **Professor Karen Clark Burg, Professor Caroline Bulsara, Dr Cathryn Josif, Maria Morgan, Amanda Timler, Jane Gaspar:** An evaluation of the impact on the provision of nursing and allied health services to aged care communities in the Northwest of Western Australia. JTSI WA grant award \$200,000.
- **Associate Professor Annmarie Hosie:**
  - Driving quality in delirium care through a patient-centred monitoring system in palliative care, NHMRC Ideas Grant (APP2010701), \$503,477
  - Understanding the influences on clinicians' delirium treatment practice and practice change: A mixed methods project using the Theoretical Domains Framework, University of Notre Dame Australia Research Support, \$13,878 2022.
  - Developing a palliative and end of life care staff training and education framework for St Vincent's Hospital Sydney Consultancy fee, \$74,000
  - Phase II feasibility pilot trial of bright light therapy for the prevention of delirium in hospitalised adults with advanced cancer (BLiPD), NIDUS, US\$5,000.
- **Dr Toby Raeburn:** NHMRC Grant Application: 2022/23 Medical Research Future Fund Clinician Researchers - Nurses Midwives and Allied Health. ID: 2022403. Title: Integrating mental health nursing care in emergency departments
- **Dr Mark Goodhew:** Notre Dame ERC Research Grant, \$10,000 for his work in the space of mental health and drug and alcohol from a nursing perspective.
- **Dr Gail Ross Adjie, Professor Sadie Geraghty, Professor Leanne Monterosso:** Breastfeeding outcomes and related attitudes and behaviours in Australian women, Rosemary Norman Foundation grant, \$110,000 .
- **Goodhew, M.,** River, J., Hollingdrake, O., Currie, J., **Orr, F.,** Sheppard-Law, S., & **Raeburn, T.** (2023). Notre Dame Early Career Researcher grant, 'Co-designing an alcohol and other drug education program with experts by experience', \$10,000.
- **Goodhew, M., Orr, F., Raeburn, T., Pinkney, R.,** River, J. & **Betihavas, V.** (2023). Notre Dame FMNMHS SoTL Seed Grants for Innovation in Learning and Teaching Scholarship, 'Co-designing the SoNM's mental health nursing curriculum in partnership with experts by experience and industry partners', \$5,000.

- River, J., Axisa, C., Cutler, N., **Goodhew, M., Orr, F.**, Saravanakumar, P. & Sheppard-Law, S. (2022). UTS FoH Teaching and Learning Scholarship Grant, 'A Substantive approach to co-designing the future of health professional education', \$5,000.
- Ryder, M., Connolly, M., Brenner, M., **Geraghty, S.**, Browne, F., Prendergast, M., Larkin, J., Furlong, E., & Curtin, M. (2022). Nursing & Midwifery Board of Ireland. University College Dublin. A review of Irish nursing and midwifery undergraduate education programmes leading to registration. €64,000 (\$98,251 AUD) and the partnership with the University College Dublin
- **Professor Caroline Bulsara** leads a grant with Assoc Professor Diane Arnold Reed, **Jane Gaspar**, Dr Karen Taylor, Prof Anne Williams, Ms Kath O'Connor. North Metropolitan Health Service, National Bowel Cancer Screening Program and WA Cancer Network (2023-24). GP perceptions and practices for positive iFOBT amongst patients. \$150,000.
- Mr Michael Page, Dr Samantha Neylon, **Professor Caroline Bulsara**, Helping Hand Inc SA ARIIA [Aged Care Research and Industry Innovation Australia] [2022 Assessing retrofitted dementia friendly design and staff education as determinants of positive outcomes for people living with dementia. \$200,000.
- Assoc Prof Rosemary Saunders & **Professor Caroline Bulsara** [2020-23] Optimising outcomes for frail hospitalised older adults - volunteer support and pain assessment interventions: A cluster randomised control trial. Assoc Prof C Etherton Beer; Dr Mustafa Afee; Jeff Hughes; Bev O'Connell' Olivia Gallagher; Bev Evans; Karla Seaman. \$734,070. 2020 – 23 with Ramsay Health.
- **Professor Leanne Monterosso, Professor Caroline Bulsara, and Melissa Berg** have been awarded two \$10,000 grants through the St John of God Research Foundation grants: Voluntary Assisted Dying: educational program for health care professionals, and Consumer preference in consenting for different types of medical research.

## Grants Submitted

SONM are building research capacity and engaging more with funding sources and smaller grant applications. Several senior academic researchers within the school are part of larger grant funded studies. Examples of grant submissions include:

### **Dr Ben Hay:**

- XR Grant for University and School with Prof Karen Clark-Burg (Lead) and Brad Chesham, titled a Bundle of Rays -W innovation Grant and
- Bodyswaps & Meta's Immersive Soft Skills Education Grant.

### **Associate Professor Annmarie Hosie:**

- MEDITATEPallCare: Meditation for the reduction of psycho-existential distress and anxiety in people with advanced cancer who are receiving palliative care, 2022 MRFF Clinician Researchers - Nurses Midwives and Allied Health
- BLiPD: Bright Light Therapy for the Prevention of Delirium in Hospitalised Adults with Advanced Cancer, 2021 MRFF Early to Mid-Career Researchers

- Improving delirium care and outcomes in palliative care units: a cluster randomised control trial of two educational methods, 2023 MRFF Dementia Ageing and Aged Care Mission, \$2.3M

**Professor Sadie Geraghty:**

- HCF Translational Grants. (2023). Optimising new graduate midwives' intention to stay in midwifery: A midwifery curriculum partnership innovation project. Bayes, S., Fisher, P., Graham, L., Geraghty, S., Bloxsome, D., & Kuliukas, L. \$160,000
- Telethon Grant. Preventing adverse outcomes in babies vulnerable to homelessness. (2023). Wood, L., Vallesi, S., Geraghty, S., Johnsen, M., Coyne, G. \$366,308.
- Innovation Challenge 2023 – Sustainable Health Priorities. (2023). Western Australian Future Health Research & Innovation Fund. Bayes, S., Fisher, P., Graham, L., Geraghty, S., Bloxsome, D., & Kuliukas, L. Optimising new graduate midwives' satisfaction with the practice environment: a midwifery curriculum partnership innovation project. \$206,000

**Dr Mark Goodhew**

- Goodhew, M., River, J., Currie, J., Sheppard-Law, S., **Orr, F.**, Hollingdrake, O., Colman, S., Steel, M., Street, K. et al. Co-designing an Alcohol and Other Drug Education Program with experts by experience to improve engagement with services for people who experience substance dependence. Submitted NSW Health Agency for Clinical Innovation in March 2023, **awaiting the outcome of the application.**

**Professor Vasiliki Betihavas**

- **Vasiliki Betihavas** – Investigator on 2022 MRFF Early to Mid-Career Researchers – Management of patients with Delirium in the ICU. Collaborative grant application between WSU, Wollongong Uni and South Western Sydney Local Health District.



# PUBLICATIONS

Several academic staff have published peer reviewed articles and a book as well as book chapters over the past year. In addition, the School of Nursing and Midwifery have achieved **92** refereed publications between 2022-23. The publications span a broad number of areas of nursing and broader health related topics such as mental health, palliative care, dementia, delirium, and midwifery related topics.

## Peer Reviewed Articles

1. Adama, E.A., **Graf, A.**, Adusei-Asante, K., & Afrifa-Yamoah, E. (2023). COVID-19 and Alternative Assessments in Higher Education: Implications for Academic Integrity among Nursing and Social Science Students. *International Journal for Educational Integrity*. IJEI-D-22-00066R1
2. Amgarth-Duff, I. **Hosie, A.** et al., Development of the Reporting Essentials for Delirium bioMarker Studies (REDEEMS) guideline. *Delirium*, 2022.
3. Arnold Reed DA, **Bulsara CE**, Gilkes L. (2023) Disruption caused by the COVID-19 pandemic response from a Western Australian metropolitan general practice perspective: a qualitative descriptive study. *Australian Journal of Primary Health*. <https://doi.org/10.1071/PY22136>
4. Asgharvahedi, F., Gholizadeh, L., **Orr, F.** & Khajehei, M. 2022. Risk of developing CVD in women with a history of gestational diabetes, *Acta Scientific Medical Sciences*, vol. 6, no. 7, pp. 105-111, doi:10.31080/ASMS.2022.06.1315
5. Boban, S.A., **Bulsara, C.**, Codde, J. et al. Employing cognitive interviewing to evaluate, improve and validate items for measuring the health-related quality of life of women diagnosed with ovarian cancer. *BMC Women's Health* 22, 391 (2022). <https://doi.org/10.1186/s12905-022-01966-w>
6. **Buchanan, K.**, Davison, C., Newnham, E., Ireson, D., & **Geraghty, S.** (2022). Care ethics framework for midwifery practice: A scoping review. *Nursing Ethics*, <http://doi.org/10.1177/09697330221073996>
7. **Buchanan, K.**, Newnham, E., **Geraghty, S.**, & Whitehead, L. (2022). Navigating midwifery solidarity: A Feminist participatory action research framework. *Women and Birth Journal*, <https://doi.org/10.1016/j.wombi.2022.06.004>
8. **Buchanan, K.**, Newnham, L., Whitehead, L., & **Geraghty, S.** (2023). Woman-centred ethics: A feminist participatory action research. *Midwifery*, 117, 103577. <https://doi.org/10.1016/j.midw.2022.103577>
9. Bull, A., Bayes, S., & **Geraghty, S.** (2023). Single registered midwives contributing care for general patients: A scoping study. *The Australian Journal of Advanced Nursing*, 40(2), 15-22, <https://doi.org/10.37464/2023.402.725>
10. Carville K, Haesler E, Norman T, Walls P, **Monterosso L.** (2022). A Consensus on Stomal, Parastomal, and Peristomal Complications. *Advances in Skin and Wound Care*, 35(8), 435-441. DOI: 10.1097/01.ASW.0000833620.47017.80
11. Carville K, Haesler E, Norman T, Walls P, **Monterosso L.** (2022). A Consensus on Stomal, Parastomal, and Peristomal Complications. *World Council of Enterostomal Therapists Journal*, 42(3), 12-22. DOI: 10.33235/wcet.42.3.12-22.

12. **Clark-Burg, K., Bulsara, C., Josif, C., Morgan, M.,** Timler, A., **Gaspar, J.,** & Myers, E. (2022). Caring for elders during COVID-19. *KAHRA Connections* (22). <https://irp.cdn-website.com/7a579f99/files/uploaded/KAHRA%20Newsletter%20August%202022.pdf>
13. **Clark-Burg, K., Bulsara, C., Josif, C., Morgan, M.,** Timler, A., **Gaspar, J.,** & Myers, E. (2022). Aged care and telehealth across COVID borders. *Inspire Magazine* (24), 52-55. [https://issuu.com/researchaustralia/docs/ra0056\\_inspire\\_aug22](https://issuu.com/researchaustralia/docs/ra0056_inspire_aug22)
14. **Conlon, D.** (2022). A PhD Journey in the Steps of Brunswik and Hammond. *The Brunswik Society Newsletter*, Vol 37. <https://brunswiksociety.org/newsletters/> (by invitation)
15. **Conlon, D., Raeburn, T.,** & Wand, T. (2023). Cognitive Continuum Theory: Can it contribute to the examination of confidentiality and risk-actuated disclosure decisions of nurses practising in mental health?. *Nursing Inquiry*, 30(2), e12520.
16. **Conlon, D., Raeburn, T.,** & Wand, T. (2023). Risk-actuated public interest disclosure practices of nurses working in mental health, pertaining to confidential information of patients. *Issues in Mental Health Nursing*, 44(6), 474-481. <https://doi.org/10.1080/01612840.2023.2214225>
17. Coyte B, **Betihavas V,** Devenish S, Foster K. Resilience, posttraumatic growth and psychological wellbeing of paramedicine clinicians: An integrative review. *Paramedicine*. 2023;0(0). doi:10.1177/27536386231206501
18. Crookes K, Saunders R, Kemp V, Gallagher O, Ghosh M, **Bulsara C.,** Gullick K, O'Connell B. (2023) Nurses' perceptions of using volunteer support in health care settings: A systematic scoping review. *International Nursing Review* 2022.
19. **Crossan, K., Geraghty, S.,** & **Balding, K.** (2023). Where is the evidence? The use of gender-neutral language within the maternity setting: A narrative literature review. *British Journal of Midwifery*, 31(9), 502-511. <https://doi.org/10.12968/bjom.2023.31.9.502>
20. Dadich A, Rodrigues J, De Bellis A, **Hosie, A.,** Symonds, T., Prendergast, J., Bevan, A., Collier, A., Patient safety for people experiencing advanced dementia in hospital: A video reflexive ethnography. *Dementia*, 2023. 22(5): p. 1057-1076.
21. Davis, S., Bayes, S., **Geraghty, S.,** & Bloxsome, D. (2023). Clearing the way for change: Development of a tool to identify barriers and enablers to practice in innovation in midwifery. A Participatory Action Research study. *European Journal of Midwifery*, 7(1), <https://doi.org/10.18332/ejm/157459>
22. Ding R, **Betihavas V.,** McElduff B, Dale S, Coughlan K, McInnes E, Middleton S & Fasugba O. Fever, Hyperglycaemia (Sugar) and Swallowing (FeSS) Management in Stroke Unit and Non-stroke Unit Hospitals: A sub study of the QASC Europe Project. *International Journal of Stroke* 2023, Vol. 18(2S) 3 –78
23. Ding R, **Betihavas V,** McElduff B, Dale S, Coughlan K, Middleton S & Fasugba O. (2023). Fever, Hyperglycaemia (Sugar) and Swallowing (FeSS) Management in Stroke Unit and Non-stroke Unit European Hospitals: Findings from the QASC Europe Study. *International Neuroscience in Nursing Journal*.
24. Down, M., Picknoll, D., Piggott, B., Hoyne, G. **Bulsara, C.** (2023) "I love being in the outdoors": A qualitative descriptive study of outdoor adventure education program components for adolescent wellbeing. *Journal of Adolescence*.
25. Down, MJA, Picknoll, D, Hoyne, G, Piggott, B, **Bulsara, C.** e-Delphi in the outdoors: Stakeholder contributions to the development of a wellbeing-focused outdoor adventure education intervention program. *Health Promot J Austral*. 2023. <https://doi.org/10.1002/hpja.777>

26. Epton, L., Patman, S., Coventry, T., & **Bulsara, C.** (2023). Hospitalised Smokers' and Staff Perspectives of Inpatient Smoking Cessation Interventions and Impact on Smokers' Quality of Life: An Integrative Review of the Qualitative Literature. *Journal of Smoking Cessation*, 2023.
27. Featherstone, I., **Hosie A.** et al., 'It's tough. It is hard': A qualitative interview study of staff and volunteers caring for hospice in-patients with delirium. *Palliative Medicine*, 2023. 37(7): p. 993-1005.
28. **Geraghty, S.**, Oliver, K., & **Wang, C.** (2022). Working from Home During the COVID-19 Pandemic for Midwifery and Nursing Academics. *British Journal of Midwifery*, 30(10), 546-553. <https://doi.org/10.12968/bjom.2022.30.10.546>
29. Gilkes, L., **Bulsara, C.**, & Mavaddat, N. (2023). Chronic non-cancer pain management—insights from Australian general practitioners: a qualitative descriptive study. *Australian Journal of Primary Health*.
30. **Goodhew, M.**, River, J., Samuel, Y., Gough, C., Street, K., Gilford, C., Cutler, N., & **Orr, F.** (2023). Learning that cannot come from a book: An evaluation of an undergraduate alcohol and other drugs subject co-produced with experts by experience. *Int J Ment Health Nurs*, 32(2), 446-457. <https://doi.org/10.1111/inm.13098>
31. **Graf, A.**, Adama, R.A., Afrifa-Yamoah, E., & Adusei-Asante, K. (2023). Perceived nexus between non-invigilated summative assessment and mental health difficulties: a cross sectional study. *Journal of Academic Ethics*. JAET-D-22-00032R2
32. Green, A., **Hosie A.**, et al., Stakeholder perspectives of a pilot multicomponent delirium prevention intervention for adult patients with advanced cancer in palliative care units: A behaviour change theory-based qualitative study. *Palliative Medicine*, 2022. 36(8): p. 1273-1284.
33. Green, J., Petty, J., Whiting, L., **Orr, F.**, Smart, L., Brown, A.M. & Jones, L.K. 2022. Blurred boundaries: when nurses and midwives give anti-vaccination advice on facebook, *Nursing Ethics*, vol. 29, no. 3, pp.552-568 <https://doi.org/10.1177/09697330211041749>
34. Gregory-Wilson R Spencer L Handsley E **Raeburn T**, 2021 'Infant removal from birth parents - how does health information impact court decisions? A scoping review' *Collegian: The Australian Journal of Nursing Practice Scholarship and Research* vol. Online First DOI: 10.1016/j.colegn.2021.08.009
35. Grotta, T., **Betihavas, V.**, Burston, A., & Jacob, E. (2023). Roles of nurse-surgeons in global surgical care: A scoping review. *Journal of Advanced Nursing*.
36. Grotta, T., **Betihavas, V.**, Burston, A., & Jacob, E. (2022). Impact of nurse-surgeons on patient-centred outcomes: A systematic review. *International Journal of Nursing Studies Advances*, 100086.
37. Grotta, T., Burston, A., **Betihavas, V.** & Jacob, E., Nurse-Surgeons in the Australian Public Health System: A Descriptive Quantitative Survey. Available at SSRN: <https://ssrn.com/abstract=4536065> or <http://dx.doi.org/10.2139/ssrn.4536065>
38. Guttormson, J., Chlan, L., Curley, M., Gelinias, C., Happ, M.B., Herridge, M., Hess, D., Hetland, B., Hopkins, R., Hosey, M., **Hosie, A.**, et al., Symptom Assessment for Mechanically Ventilated Patients: Principles and Priorities: An Official American Thoracic Society Workshop Report. *Annals of the American Thoracic Society*, 2023. 20(4): p. 491-498.
39. Halkett GKB, **Berg MN**, Daudu D, Dhillon HM, Koh ES, Ownsworth T, Lobb E, Phillips J, Langbecker D, Agar M, Hovey E, Moorin R, Nowak AK. Supportive care of patients diagnosed

- with high grade glioma and their carers in Australia. *J Neurooncol.* 2022 May;157(3):475-485. doi: 10.1007/s11060-022-03991-z.
40. Halkett GKB, Breen LJ, **Berg M**, Sampson R, Sim HW, Gan HK, Kong BY, Nowak AK, Day BW, Harrup R, James M, Saran F, Mcfarlane B, Tse C, Koh ES. Determining the Research Priorities for Adult Primary Brain Tumours in Australia and New Zealand: A Delphi Study with Consumers, Health Professionals, and Researchers. *Curr Oncol.* 2022 Dec 17;29(12):9928-9955. doi: 10.3390/curroncol29120781.
  41. **Hay, B.** Manuscript # leader-2023-000755 entitled "Improve Ethnic Female Minority Representation In Healthcare Leadership: A Call To Action." for BMJ Leader. <https://bmjleader.bmj.com/>
  42. **Hay, S. J.**, Forster, D. A., McLachlan, H. L., Newton, M., Nicholson, J. M, Grimes, H. A., McLardie-Hore, F., & Shafiei, T (2023) Evaluation of 'Growing Together' - a pregnancy and early parenting resource: primary and secondary outcomes of a cluster randomised controlled trial in a tertiary maternity service in Australia. *PLOSOne* under review.
  43. Hill AM, **Ross-Adjie G**, McPhail SM, Jacques A, Bulsara M, Cranfield A, Etherton-Bear C, Raja Azlan N, Powell SJ, Hardisty G, **Monterosso L.** (2022). Incidence and associated risk factors for falls in older adults post discharge who undergo elective total knee replacement surgery- a prospective cohort study. *American Journal of Physical Medicine & Rehabilitation*; 101(5): 454-459 doi: 10.1097/PHM.0000000000001848
  44. **Hosie A.** and Agar M. Critical care admission rates for people with dementia: too high, too low, or just right? *Age and Ageing* 2023; 52: afad200. DOI: 10.1093/ageing/afad200
  45. **Hosie, A.**, et al., Older persons' and their caregivers' perspectives and experiences of research participation with impaired decision-making capacity: A scoping review. *Gerontologist*, 2022. 62(2): p. e112-e122.
  46. Ismaila, Y., Bayes, S. & **Geraghty, S.** (2023) Midwives' experiences of the consequences of navigating barriers to maternity care, *Health Care for Women International*, DOI: 10.1080/07399332.2023.2284771
  47. Johnson, M., Ferguson, C., Thornton, A., Israel, J., Cruikshank, M., Debono, D., Fernandez, R., Fry, M., Hickman, L., **Hosie, A.**, et al., Exploring the SPHERE Nursing and Midwifery Clinician Researcher Career Pathway: A qualitative study. *Collegian*, 2023.
  48. Kernick, L., Glare, P., **Hosie, A.**, et al, Prevalence and management of chronic nonmalignant pain in palliative care populations: A systematic review. *Palliative & Supportive Care*, 2023: p. 1-7.
  49. Kinchin, I., Edwards, L., **Hosie, A.**, et al., Cost-effectiveness of clinical interventions for delirium: A systematic literature review of economic evaluations. *Acta Psychiatrica Scandinavica*, 2023. 147(5): p. 430-459.
  50. Kurup, C., Burston, A. S., **Betihavas, V.**, & Jacob, E. R. (2023). The perspectives of internationally qualified nurses regarding their specialty skill transition to Australia: A cross-sectional survey. *Journal of Advanced Nursing*.
  51. Kotowski, J., Fowler, C. & **Orr, F.** 2022. Bottle-feeding, a neglected area of learning and support for nurses working in child health: an exploratory qualitative study, *Journal of Child Health Care*, vol. 26, no. 2, pp.199-214, doi.org/10.1177/13674935211007321
  52. Kuek, J,H,L., **Raeburn, T.**, Grace, A,L, Liang., Wand, T. (2023): Mental health professionals' perspectives regarding how recovery is conceptualized in Singapore: a constructivist grounded theory study. *Journal of Mental Health*, DOI: 10.1080/09638237.2023.2182431

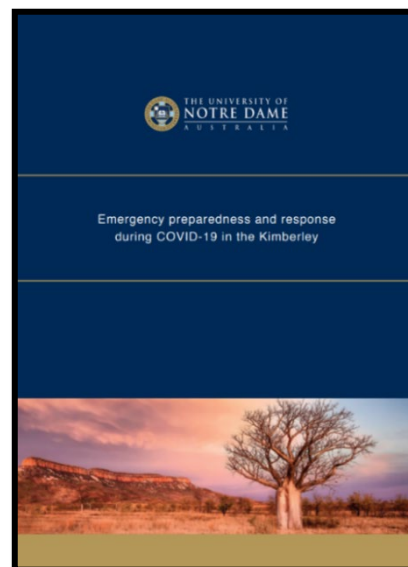
53. Kuek, J. H. L., **Raeburn, T.**, Chow, M. Y. Z., & Wand, T. (2022). Lived experience perspectives of factors that influence mental health recovery in Singapore: a thematic analysis. *Mental Health and Social Inclusion*. DOI: 10.1108/MHSI-09-2022-0063
54. Kuek, J.H.L, **Raeburn, T.**, & Timothy Wand (2023) Asian perspectives on personal recovery in mental health: a scoping review, *Journal of Mental Health*, 32:2, 517-533, DOI: 10.1080/09638237.2020.1818709
55. Lankin, E., **Graf, A.**, Schultz, R., Johnson, R., & McCullough, K. (2023) Consumer perspectives of quality care: Exploring Aboriginal patient journeys from remote primary health care clinical to Alice Springs. *Collegian*
56. Lee, W., Pulbrook, M., Sheehan, C., Kochovska, S., Chang, S., **Hosie, A.**, et al., , Evidence of Effective Interventions for Clinically Significant Depressive Symptoms in Individuals with Extremely Short Prognoses is Lacking – a Systematic Review, *Journal of Palliative Medicine*, 2020 Mar;25(3):341-342. doi: 10.1089/jpm.2021.059
57. Lobb, E., Maccallum, F., Phillips, J., Agar, M., **Hosie, A.**, et al., The COVID-19 pandemic: Bereavement outcomes between hospital and home deaths in palliative care, *Journal of Pain & Symptom Management* (in press).
58. Lovell, M.R., Phillips, J.L., Lockett, T., Lam, L., Boyle, F.M., Davidson, P.M., Cheah, S.L., McCaffrey, N., Currow, D.C., Shaw, T., **Hosie, A.**, et al., Effect of Cancer Pain Guideline Implementation on Pain Outcomes Among Adult Outpatients With Cancer-Related Pain: A Stepped Wedge Cluster Randomized Trial. *JAMA Network Open*, 2022. 5(2).
59. Lockett, T., Read, A., **Hosie, A.**, et al., Patient and carer experiences of pain care in an Australian regional comprehensive cancer care setting: A qualitative study. *Rural and Remote Health*, 2022. 22(2): p. 1-9.
60. Maccallum, F., Breen, L. J., Phillips, J.L., Agar, M. R., **Hosie, A.**, et al., The mental health of Australians bereaved during the first two years of the COVID-19 pandemic: A latent class analysis, *Psychological Medicine*, in press
61. MacLulich, A.M.J., **Hosie, A.**, Tiegues, Z., Davis, DHJ ., Three key areas in progressing delirium practice and knowledge: recognition and relief of distress, new directions in delirium epidemiology, and developing better research assessments. *Age and Ageing*, 2022.
62. Mascio, R., Lynch, S., Phillips, J.L., **Hosie, A.**, Best, M., Nurses' models of spiritual care: A cross-sectional survey of American nurses. *Palliative & Supportive Care*, 2023: p. 1-11.
63. Morgan, T., Ku, M., **Berg, M.** and Halkett, G.K. (2023), Australian medical radiation practitioners' perspectives of continuing professional development: An online cross-sectional study. *J Med Radiat Sci*. <https://doi.org/10.1002/jmrs.691>
64. Morris, S., **Geraghty, S.**, & Sundin, D. (2022). Breech presentation management: A critical review of leading clinical practice guidelines. *Women and Birth*, 35(3), 233-242. <https://doi.org/10.1016/j.wombi.2021.06.011>
65. Morris, S., **Geraghty, S.**, & Sundin, D. (2022). Women's experiences of breech birth decision making: An integrated review. *European Journal of Midwifery*, 6(2), <https://doi.org/10.18332/ejm/143875>
66. Murphy, M. C., Debenham, J., **Bulsara, C.**, Chivers, P., Rio, E. K., Docking, S., ... & Gibson, W. (2022). Assessment and monitoring of Achilles tendinopathy in clinical practice: A qualitative descriptive exploration of the barriers clinicians face. *BMJ open sport & exercise medicine*, 8(2), 1-11, e001355. <https://doi.org/10.1136/bmjsem-2022-001355>

67. Norman, T., Haesler, E., Carville, K., Walls, P., **Monterosso, L.** (2022). Establishing a consensus on stomal, parastomal and peristomal complications. *Journal of Stomal Therapy Australia*, 42(2), 10–19. DOI: 10.3316/informit.509866957945703.
68. O’Hanlon, S., Baxter, M. and **Hosie, A.**, Postoperative delirium in older patients with cancer: the role of psychological distress and social support. *Current Opinion in Supportive and Palliative Care*, 2022. 16(1): p. 38-47.
69. Oliver, K., & **Geraghty, S.** (2022). A pilot study exploring midwives’ job satisfaction: Is being of service to women the key? *European Journal of Midwifery*, <https://doi.org/10.18332/ejm/146087>
70. Pangerl, S., Sundin, D., & **Geraghty, S.** (2022). Adherence to Screening and Management Guidelines for Maternal Group B Streptococcus Colonization in Pregnancy. *Journal of Advanced Nursing*, <http://doi.org/10.1111/jan.15249>
71. Pathrose S **Raeburn T** Sanchez P Elmir H Alomari A Ogunsi O, 2021 ‘Team teaching in undergraduate nursing programs: A scoping review’ *Collegian: The Australian Journal of Nursing Practice Scholarship and Research* vol. Online First DOI: 10.1016/j.colegn.2021.09.005
72. Piggott, B., Chivers, P., **Bulsara, C.**, Conlon, J., Grigg, K., Harris, S. A., Lambert, M., Millar, L., & Pollard, C. M. (2022). “I’m making a positive change in my life”: A mixed method evaluation of a well-being tertiary education unit. *Health Promotion Journal of Australia*, Early View (Online First).
73. Piggott, B., Chivers, P., Sarasjärvi, K.K., Bhoyroo, R., Lambert, M., Millar, L., **Bulsara, C.** & Codde, J., 2023. Life in a time of COVID: retrospective examination of the association between physical activity and mental well-being in western Australians during and after lockdown. *BMC public health*, 23(1), p.701.
74. Potter, K.M., Pun, B.T., Maya, K., Young, B., Williams, S., Schiffman, M., **Hosie, A.**, Boehm, L.M. (2023 In press). Delirium & COVID-19: Looking Back, Moving Forward. *Crit Care Nurs Clin North Am.*
75. Pugh J, McCoy K, Williams A, Pienaar C, Bentley B, **Monterosso L.** (2022). Neurological patient and informal caregiver quality of life, and caregiver burden: A cross-sectional study of postdischarge community neurological nursing recipients. *Contemporary Nurse*, 58(2-3), 138-152. DOI: 10.1080/10376178.2022.2086892.
76. **Raeburn, T.**, Bradshaw, J., Cleary, M. (2023) Mental health history – It matters. *Issues in Mental Health Nursing*, 44:1, 3-5, DOI: 10.1080/01612840.2022.2138437
77. **Raeburn, T.**, Zugai, J., Liston, C., Saunders, P., & Doyle, K. (2023). How to Use Microhistory Methodology in Mental Health Research. *Issues in Mental Health Nursing*, 1-8. DOI: 10.1080/01612840.2022.2129532"
78. Rao-Newton A, Gallagher E, Mickelsen J, **Hosie, A.**, et al. Timely Assessment of Breathing-Related Distress in Community Palliative Care: A Multidisciplinary Collaborative Quality Improvement Project. *Journal of Palliative Medicine* 2023. DOI: 10.1089/jpm.2022.0576.
79. River, J., Bellingham, B., Isobel, S., Gill, K., Boydell, K., **Conlon, L.**, **Goodhew, M.**, Cutler, N., & Kemp, H. (2023). Raising the Bar: A Qualitative Study of a Co-Produced Model for Promoting research Partnerships in Mental Health. *International Journal of Qualitative Methods*, 22. <https://doi.org/10.1177/16094069231213268>
80. Saunders R, Crookes K, Atee M, **Bulsara C**, et al. Prevalence of frailty and pain in hospitalised adult patients in an acute hospital: a protocol for a point prevalence observational study. *BMJ Open* 2021;11:e046138. doi:10.1136/bmjopen-2020-046138

81. Saunders R, Crookes K, Gullick K, Gallagher O, Seaman K, Scaini D, Ang M, **Bulsara C.**, Ewens B, Hughes J, O'Connell B, Etherton-Ber C. 2022. Nurses leading volunteer support for older adults in hospital: A discussion paper. *Collegian*. September 13, 2022;16:52
82. Saunders, R., Crookes, K., Seaman, K., Ang, S.G.M., **Bulsara, C.**, Bulsara, M.K., Ewens, B., Gallagher, O., Graham, R., Gullick, K. & Haydon, S., 2023. Frailty and pain in an acute private hospital: an observational point prevalence study. *Scientific reports*, 13(1), p.3345.
83. Skoss R, **Bulsara, C.**, Brett, T., Radford, J., Heal, C., Gill, G., Hespe, C.M., Vargas-Garcia, C., Li, I.W., Sullivan, D.R., Vickery, A.W. and Pang, J., Participant experiences of intervention to detect and manage familial hypercholesterolaemia in Australian general practice – a qualitative descriptive study. *Australia Journal of General Practice*. In press
84. Tan, Xue Ying, Wiseman, T., & **Betihavas, V.** (2022) "Risk factors for nosocomial infections and/or sepsis in adult burns patients: An integrative review." *Intensive and Critical Care Nursing*: 103292.
85. Timler, A. **Gaspar, J.** Clark-Burg, K., Bulsara, C., Morgan, M. Josif, C. & Myers, E. (2023) The delivery of health services and telehealth to provide aged care during COVID-19 in the Kimberley region of Western Australia. *Collegian* (in review).
86. Timler, A., **Bulsara, C.**, Bulsara, M., Vickery, A., Jacques, A., & Codde, J. (2023). Examining the use of cannabidiol and delta-9-tetrahydrocannabinol-based medicine among individuals diagnosed with dementia living within residential aged care facilities: Results of a double-blind randomised crossover trial. *Australasian Journal on Ageing*.
87. **Timler, A., Clark-Burg, K., Bulsara, C., Josif, C., Morgan, M., Gaspar, J.** The delivery of health services and telehealth to provide aged care during COVID-19 in the Kimberley region of Western Australia, *Collegian* (submitted)
88. Tosson, D., Lam, D., & **Raeburn, T.** (2022). Why Australia should move towards nationally consistent mental health legislation? *Australasian Psychiatry*. DOI: 10398562221116290
89. **Wang, C. C.**, Lo, J., Saunders, R., Adama, E., **Bulsara, C.**, Etherton-Ber, C., & Yang, A. W. H. (2022). Light acupuncture and five-element music therapy for nurses' mental health and well-being during and post-COVID-19: protocol for a randomised cross-over feasibility study. *BMJ open*, 12(4), e057106. <https://doi.org/10.1136/bmjopen-2021-057106>
90. **Wang, C.**, Lo, J., **Geraghty, S.**, & Hong Yang, A.W. (2022). Effects of Tai Chi on the quality of life, mental wellbeing, and physical function of adults with chronic diseases: protocol for a single-blind, two-armed, randomised controlled trial. *PLOS One Journal*, <https://doi.org/10.1371/journal.pone.0270212>
91. **Zugai, J., Orr ,F.** & Levett-Jones, T. 2022. Online gamified quizzes in undergraduate mental health nursing education: thematic analysis of students' qualitative view, *Issues in Mental Health*, <https://doi.org/10.1080/01612840.2021.2013367>

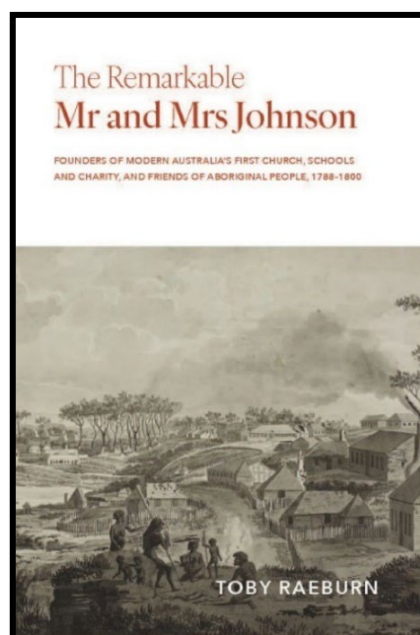
## Books and Book Chapters

- **Clark-Burg, K., Bulsara, C., Josif, C., Morgan, M., Timler, A., Gaspar, J., & Myers, E.** (2022). Emergency preparedness and response during COVID-19 in the Kimberley, URL: <https://doi.org/10.57981/c8xt-7t25>, ISBN: 9781922319012
- **Cutler, N., & Goodhew, M.** Cultural Considerations in emergency care. In K. Curtis, R. Shadan, M. Fry, & J. Considine (Eds.), *Emergency and Trauma Care for Nurses and Paramedics* (4th Edition ed.). Elsevier.
- **Goodhew, M., & Robinson, T.** (2022). Caring for a person with substance dependence and complex post-traumatic distress syndrome In T. Levett- Jones (Ed.), *Clinical reasoning: learning to think like a nurse* (3rd Edition ed.). Pearson.



- **McChlery, S., Buchanan, K., Knapp, N., & Geraghty, S.** (2023). First Nations Led Artwork with Midwifery Students. School of Nursing & Midwifery. The University of Notre Dame Australia.
- **Orr, F.** 2023, Mental health and recovery-oriented mental health services (ch 11), in L. Reynolds., D. Debono. & J. Trevaglia. (Eds). *Understanding the Australian health care system*, (5<sup>th</sup> ed.). Elsevier.

- **Phillips, J., Hosie, A. & Davidson, P.,** 'Palliative care in the nursing home', *Oxford Textbook of Palliative Medicine*, 6th edition, 2022
- **Raeburn, T.** (2023) *The Remarkable Mr and Mrs Johnson: Founders of Modern Australia's First Church, Schools and Charity, and Friends of Aboriginal People, 1788-1800.* Australian Scholarly Publishing Pty, Limited.





# PRESENTATIONS

## Keynote Speaker

- **Raeburn, T.** 2023. Early colonial Australian mental health practitioners and the good colonist paradox, 1810-1850 Society of Australian Genealogists Conference. In Search of...The Australian Welfare Experience
- **Raeburn, T.** (2023) Community attitudes to support equality, inclusion and participation in society for people with disability. Central Queensland University Disability Conference.

## Conference Publications (full paper-refereed)

- **Hay, S.,** Shafiei, T., McLachlan, H. L., Newton, M., Nicholson, J. M., Grimes, H., Forster, D. (2022). P49 - Exploring the impact of a parenting information kit on experience of motherhood and maternal emotional wellbeing: a cluster randomised controlled trial. *Women and Birth*, 35, 57-58. doi: <https://doi.org/10.1016/j.wombi.2022.07.164>
- Gregory-Wilson, R., **Raeburn, T.**, Handsley, E., Spencer, L. (2023) Infant removal from birth parents - how does health information impact court decisions? 47th International Mental Health Nursing Conference. *Mental Health Nursing Unleash the Potential*. The Australian College of Mental Health Nursing, Melbourne.
- Gregory-Wilson., **Raeburn, T.**, Handsley, E., Spencer, L. Vulnerability theory: a framework for mental health nursing research for infants in out-of-home care. (2023) 47th International Mental Health Nursing Conference. *Mental Health Nursing Unleash the Potential*. The Australian College of Mental Health Nursing, Melbourne (Poster Presentation).
- Hindman, J., **Raeburn, T.** (2023) Collaborating to address Australia's mental healthcare workforce challenges; A case study of a Local Health District and University partnership. 47th International Mental Health Nursing Conference. *Mental Health Nursing Unleash the Potential*. The Australian College of Mental Health Nursing, Melbourne.
- Johnson, A., **Raeburn, T.**, Ramjan, L., Kenny, A., George, A. Oral health-related knowledge, attitudes, and practices of individuals experiencing mental illness– A systematic review. (2023) 47th International Mental Health Nursing Conference. *Mental Health Nursing Unleash the Potential*. The Australian College of Mental Health Nursing, Melbourne.

## Conference Presentations (not peer-refereed)

Several academic staff have presented at conferences on the past year both national and internationally based. These were not peer reviewed paper publications / presentations but demonstrate the breadth of research that is being showcased at both local and International level. This includes management of stroke patients in a clinical setting:

- Ding R, **Betihavas V**, Mcelduff B, Dale S, Coughlan K, McInnes E, Middleton S, Fasugba O. (2023, August). Fever, Hyperglycaemia and Swallowing (FeSS) management in Stroke Unit and Non-stroke Unit Hospitals: A sub study of the QASC Europe Project. Oral presentation at the Applied Medical Research, Melbourne, Australia.
- Ding R, **Betihavas V**, Mcelduff B, Dale S, Coughlan K, McInnes E, Middleton S, Fasugba O. (2023, August). Fever, Hyperglycaemia (Sugar) and Swallowing (FeSS) Management in Stroke Unit and Non-stroke Unit Hospitals: A sub study of the QASC Europe Project. Oral presentation at the ACMD Research Week Opening Ceremony, Melbourne, Australia.
- Ding R, **Betihavas V**, Mcelduff B, Dale S, Coughlan K, McInnes E, Middleton S, Fasugba O. (2023, August). Fever, Hyperglycaemia (Sugar) and Swallowing (FeSS) Management in Stroke Unit and Non-stroke Unit Hospitals: A sub study of the QASC Europe Project. Oral presentation at the ACMD Research Week Moderated Session, Melbourne, Australia.
- **Orr, F.**, Gill, K., Sinclair, C., Franks, S., River, J. & **Goodhew, M.** 'I want people to see us as a whole person': A co-produced study of living with Functional Neurological Disorder'. Notre Dame Health Research Symposium, September 2023, Sydney.
- Sinclair, C., **Orr, F.**, Gill, K., Franks, S., River, J. & **Goodhew, M.** 'A co-produced study: Exploring the experiences of Functional Neurological Disorder to strengthen service delivery'. The Mental Health Services (TheMHS) Conference, October 2022, Sydney.
- Narayan, Nitasha, Benjamin Hay International Congress on Innovation and Leadership in Nursing and Midwifery Perth, WA 11-12 May 2023 Investing in the future: Enhancing nursing students' preparedness in dementia care Oral

Nursing skills and the nursing workforce (most specifically International and newly graduated nurses) as well as nursing in rural and remote Kimberley region of Western Australia.

- Grotta, Tenber and Burston, Adam and **Betihavas**, Vasiliki and Jacob, Elisabeth . (2023, November). Roles of nurse-surgeons in global surgical care at 5th Asia Congress in Nursing Education (ACiNE), Constantinople, Turkey.
- Grotta, Tenber and Burston, Adam and **Betihavas**, Vasiliki and Jacob, Elisabeth. (2023). Roles of nurse-surgeons in global surgical care. Yonsei International Nursing Conference (YINC), Singapore.
- Kurup, C., **Betihavas, V.**, Burston, A., & Jacob, E. (2023). The transition of internally qualified nurses' specialty skills to clinical practice in developed countries after immigration. International Conference on Transcultural Nursing and Future Directions

- Kurup, C., Burston. A., **Betihavas, V.**, Burston. A., & Jacob., E. (2023, August 2-4). Is immigration the path to nurses' happily ever after? Signa's 34th International Nursing Research Congress, Abu Dhabi, UAE.
- **Clark-Burg, K., Bulsara, C., Josif, C., Morgan, M., Timler, A., Gaspar, J., & Myers, E.** (2022, 2 – 4 August). Aged care and telehealth across COVID-19 borders in the Kimberley. Bridging social distance: Rural health innovating & collaborating, 16th National Rural Health Conference, Brisbane, Queensland, Australia. URL: <https://www.ruralhealth.org.au/16nrhc/wp-content/uploads/2022/08/2022-08-02-5pm-Program.pdf>
- **Clark-Burg, K., Bulsara, C., Josif, C., Morgan, M., Timler, A. & Gaspar, J.** (2022, 21 – 23 September). Aged care and telehealth across COVID border in the Kimberley, 2022 ACHSM Asia Pacific Annual Congress. URL: <https://www.achsm.org.au/Portals/15/documents/events/congress/2022-congress/ACHSM Congress Perth 2022 Program.pdf>
- **Clark-Burg, K., Bulsara, C., Josif, C., Morgan, M., Timler, A. & Gaspar, J.** (2023, 1 – 5 July). Aged care and telehealth across COVID border in the Kimberley region, Western Australia. Nurses together: a force for global health, 29th International Council of Nurses Congress, Montreal, Canada. URL: ICN Congress 2023 Montreal | ICN - International Council of Nurses
- Kurup, C., **Betihavas, V.**, Burston. A., & Jacob., E. (2023, March 16-18). The transition of internationally qualified nurses' specialty skills to developed countries clinical practice after immigration: A mixed method research. 3rd Edition of Singapore Nursing Research Conference, Singapore.
- Juhn, Yoo-Kyung., Mayo, Irene., **Betihavas, Vasiliki.** (2023, July). Burnout and compassion fatigue in new graduate nurses. Presented at the International Council of Nurses Conference, Montreal Canada.
- Kurup, C., Jacob., E., **Betihavas, V.**, & Burston. A (2023, July). The transition of internationally qualified nurses' specialty skills to developed countries clinical practice after immigration: A mixed method research. Presented at the International Council of Nurses Conference, Montreal, Canada.

Many of the research outputs and conference presentations were also cross disciplinary such as the work completed by Holly Farley, Sarah McGann (School of Architecture) and **Caroline Bulsara** (School of Nursing & Midwifery) in the area of residential aged care and resident wellbeing. Also, a publication completed collaboratively with School of Physiotherapy.

- Farley, H; McGann, S; **Bulsara, C.** (2023) Socio-Spatial and Quality of Life Themes in Aged Care Architecture: Development of a spatial analysis matrix. International Conference of the Architectural Science Association (ANZAScA). Oral.
- A qualitative exploration of the barrier's clinicians face in the assessment and monitoring of Achilles tendinopathy. Mr Myles Murphy, Dr James Debenham, **Professor Caroline Bulsara**, Dr Paola Chivers, Dr Ebonie Rio, Dr Sean Docking, Dr Mervyn Travers, A/Prof William Gibson. Australian Rheumatology Association ASM 20 May 2022.

State conference and title of presentations. These were attended by a number of research active staff and included the International Congress on Innovations and Leadership in Nursing & Midwifery (ICILNM) Perth, WA- May 2023 (**Nitasha Narayan, Dr Ben Hay, and Associate Professor Ainslie Robinson**) 'Investing in the future: Enhancing nursing students preparedness in dementia care' and at the local Notre Dame 2023 Health Research Symposium where they presented on 'Wellbeing: Journey Together: Transformative learning: Nursing students' (r)evolution'

The perioperative team also hosted and presented at the ACORN 2023 Perioperative Leadership Summit- September 2023 with the project titled 'Leading through education: Undergraduate preparation to expand the future workforce' Eunice Tan, **Dr Benjamin Hay**, Marie Fielding, & Chris Adams· Western Australia Simulation in Healthcare Alliance AGM and Education Event, Fremantle, WA November 2023 and Investing in the future: 'Virtual Reality Simulation in dementia care'. **Dr Gail Ross-Adjie** also presented her project, 'Graduate Diploma of Perioperative Nursing a retrospective review 2018-2022', at the Australian Association of Perioperative Nursing Leadership Seminar held in Fremantle in August 2023.

The midwifery team presented both locally (Research Bites seminar series – Appendix C), nationally, and Internationally at several conferences as follows:

- Crossan, KA., **Geraghty, S., Balding, K.** (2023, November 27). The use of gender-neutral language in maternity settings. [Poster presentation]. Psi Alpha symposium, Perth, Western Australia.2022.
- **Geraghty, S.,** & Oliver, K. (2023). A mixed-methods pilot study exploring midwives' job satisfaction: Is being of service to women the key? [Poster presentation]. Psi Alpha symposium, Perth, Western Australia.
- **McChlery, S.** "Women's lived experiences of perimenopause". Seminar presentation at School of Nursing and Midwifery Research Bites Seminar, 31 August 2022.
- **McChlery, S., Geraghty, S., Buchanan, K.,** Pangerl, S., Hogan, R., **Balding, K.** "Strengthening midwifery through art: How a collaborative Indigenous art workshop contributes to cultural safety understanding". Oral presentation at the Trans-Tasman Midwifery Education Consortium conference, Canberra, 30-31 March 2023.
- **McChlery, S., Geraghty, S., Buchanan, K.,** Pangerl, S., Hogan, R., **Balding, K.** "An Aboriginal art workshop in a midwifery curriculum can impact the cultural safety knowledge of midwifery students". Poster presentation at the WA ACM conference, Perth, WA, 4 November 2022.
- Oliver, K., & **Geraghty, S.** (2023). Impact and Experience of Working from Home During the COVID-19 Pandemic for Midwifery and Nursing Academics. [Poster presentation]. Psi Alpha symposium, Perth, Western Australia.

**Dr Mark Goodhew** was an invited speaker for the Walk on the Wild Side Symposium, Royal Brisbane & Woman's Hospital – Co-designing AOD nursing education with experts by experience – 9th June 2023 as well as the APSAD Scientific Drug and Alcohol Conference, Co-designing the Future of Nursing Drug and Alcohol Education with Experts by Experience in Adelaide on 13th November.

**Associate Professor Annmarie Hosie** convened the Australasian Delirium Association DECLARED 2023 meeting in Sydney, November 1-3. She has also presented her delirium research and facilitated workshops at several conferences, including the American Delirium Society 2022 and 2023 meetings, Palliative Care NSW 2022 conference, the Oceanic Palliative Care Conference in 2023, DECLARED 2023.

# AWARDS

## ***Professor Leanne Monterosso - Lifetime Achievement Award***

**Professor Leanne Monterosso** was named as one of two additions to the WANMEA Lifetime Achievement Honour Roll for 2023 at the WA Nursing and Midwifery awards on Friday 6 October. The Lifetime Achievement Honour Roll is awarded to nurses and midwives who have had highly impactful careers, changing the nursing and midwifery landscape in Western Australia, nationally and internationally. This achievement is a culmination of Leanne's forty-year career.



Other academic staff received a number of awards for Research and L&T areas. **Dr Ben Hay** has applied for an award in the 'Shaping Australia Awards' – 'Future Builder Award' for 'SMARTcare6: Beyond the Bedside' showcasing and building a world of opportunity for nursing students and graduates' and has been nominated by Head of School of Nursing and Midwifery and staff/colleagues for a: 2024 WA Nursing and Midwifery Excellence Awards for the category of Excellence in Education.



## ***Associate Professor Anmarie Hosie***

**Associate Professor Anmarie Hosie** was awarded the [NIDUS Investigator of the Month](#) in June 2023, and 'Deliriumologist of the Year' award from the Australasian Delirium Association in November 2023.

### ***The Midwifery Team***

**The Midwifery Team** (led by **Professor Sadie Geraghty**) won a SEED Grant (SoTL) in 2020 and the aim of the ensuing research was to explore midwifery students' experience of the Aboriginal led art workshop and how this contributed to their cultural safety learning. The project was entitled 'The Art of Cultural Safety in a Midwifery Curriculum' and the study evaluated the Aboriginal and Torres Strait Islander led art workshops conducted within the Notre Dame midwifery curriculum with midwifery students. These art workshops were led by a Noongar Elder, who guided the midwifery students through a story line using Aboriginal art, which resulted in a team produced pieces of artwork by midwifery students that honoured and valued the ancient knowledge of Aboriginal and Torres Strait Islander people. During the art workshop, Noongar women's business was imparted, and midwifery students were immersed in Aboriginal traditional birthing practices, art, and teamwork. This study aimed to explore midwifery students' perceptions of their ability to provide culturally safe maternity care for women, and how this formal education was received in relation to cultural care within maternity needs.

The study resulted in an oral presentation at the Australian College of Midwives Conference, a paper awaiting review for publication in a Journal, and two large photobooks (one for the School of Nursing and Midwifery, and one for the VC's office).

### ***Professor Karen Clark-Burg***

**Professor Karen Clark-Burg** was awarded two fellowships in 2023. She received Fellowship with the Australian College of Nursing (ACN) in July 2023 at the Annual General Meeting and National nursing forum in Adelaide. Karen also received Fellowship with the Australasian College of Health Service Management (ACHSM) in October 2023 in Canberra.

### ***Dr Fiona Orr***

**Dr Fiona Orr** Certificate of Excellence in Consumer and Community Involvement in Health Research and the Notre Dame Health Research Symposium (2023), and the Australian Award for University Teaching in 2022 for Citation for Outstanding Contributions to Student Learning for the Virtual empathy museum: Developing healthcare students' empathy skills (Pich, Levett-jones, Govind, Jakimowicz, Orr, Dean, Kelly, and Maguire).

### ***Associate Professor Toby Raeburn***

**Associate Professor Toby Raeburn** was awarded Excellence in Provision of Mental Health Award; Gradstart Revitalising the Workforce Western New South Wales Local Health District (WNSWLHD) in 2023.

# COMMITTEE MEMBERSHIPS & OTHER RESEARCH ACTIVITIES

Academic staff are represented externally and within Notre Dame on several external committees and other research activities.

**Dr Ben Hay** and **Professor Karen Clark-Burg** are on the Leadership Faculty of the Australian College of Nursing (ACN). They coordinate, promote and moderate as an MC three highly successful national webinars: Leadership, mentorship and more; Leadership is a Journey, not a Destination; Nursing Leadership: A Global Perspective (in conjunction with the ACN Global Health Faculty).

**Dr Ben Hay** and **Nitasha Narayan** are representatives in the WA Simulation in Healthcare Alliance group (WASHA).

**Associate Professor Annmarie Hosie** is chair and a member of several delirium and palliative care committees (local, national, and International):

- Chair, Australasian Delirium Association DECLARED 2023 conference, 2022-23
- Chair, PaCCSC Mood, Neurological and Cognitive Disorder Symptom Node Sub-Committee 2021-23
- Committee Member, Palliative Care NSW 2020-23
- Member, St Vincent's Health Network Sydney End-of-Life Care Committee 2020-23
- SPHERE Nursing and Midwifery Implementation Science & Knowledge Translation Academy 2020-23
- Member, St Vincent's Health Network Delirium Community of Practice 2019-23
- Executive, SPHERE Palliative Care Clinical Academic Group 2019-23
- PaCCSC RAPID Nursing Series, 2019-23
- Committee member, Australasian Delirium Association (International) 2014-23
- Mentor, Stanford Quality Improvement Program, SPHERE Palliative Care Clinical Academic Group 2021, 2022, 2023
- SUNRISE Delirium Research Collaborative (International) 2017-23

**Dr Sheena McChlery** and **Professor Sadie Geraghty** are both representing midwifery as follows:

- Trans-Tasman Midwifery Education Consortium (TTMEC)
- The Practising Midwife Australia Editorial Board
- Congress of Aboriginal and Torres Strait Islander Nurses and Midwives (CATSINaM)
- Australian College of Nurses (ACN)

- Editorial Board Member of the British Journal of Midwifery (UK)
- Congress of Aboriginal and Torres Strait Islander Nurses and Midwives (CATSINaM)
- NSW Round Table Universities Committee

**Dr Mark Goodhew** is a member of the Community Mental Health, Drug & Alcohol Research Network (CMHDARN).

**Dr Fiona Orr** is the Board Director, The Mental Health Services Network, Australia and New Zealand, and a Member of the Governance Committee.

**Darren Bailey** and **Katie Janz** are members of the Executive Committee of the WA Simulation in Healthcare Alliance (WASHA). **Darren Bailey** is a legacy member of the Australian Resuscitation Council - WA Branch Committee. The aim of the Australian Resuscitation Council (ARC) is to foster and co-ordinate the practice and teaching of resuscitation, promote uniformity and standardisation of resuscitation, and act as a voluntary co-ordinating body <https://resus.org.au/>.

**Professor Caroline Bulsara** is a member of the National Cervical Cancer Screening guidelines (NCCSP) working party and the Solaris Cancer Care clinical guidelines working party.

**Associate Professor Toby Raeburn** is an NSW Branch Committee Member; Australian and New Zealand Society for the History of Medicine (ANZSHM) 2022-Present

**Professor Vasiliki Betihavas** - CCRICKET - Collaboration in Critical care Research for Innovation and Evidence Translation, Members from WSU, Wollongong Uni & South Western Sydney Local Health District

Oral presentation: **Ross-Adjie G.** The Graduate Diploma of Perioperative Nursing a retrospective review 2018-2022. Australian Association of Perioperative Nursing Leadership Seminar, Fremantle, August 2023.



# RESEARCH STUDENTS

## HDR Candidates (under examination as of November 2023)

- **Loretta Murphy** (Doctor of Philosophy). The development of an ancillary neurological examination tool for nursing: the mini-Neurological Assessment tool. Supervised by Professor Kylie Russell and Dr Tracey Coventry.
- **Irene Van Standen** (Master of Nursing Research). An examination of the trends in activities of daily living in the 12 months after total knee arthroplasty: a descriptive study. Supervised by Dr Gail Ross Adjie and Professor Leanne Monterosso.
- **Meagan Vidyaeva** (Master of Philosophy Nursing) The lived experience of alarm fatigue in RNs working in critical care/ICU environment. Supervised by Dr Ben Hay and Dr Angela Owen.

## PhD and Masters by Research Candidates

Surname	First name	Degree	Title	Campus	PS	CS	Industry & CS
Asgharvahedi	Farnoosh	Doctor of Philosophy	Cardiovascular risk factors during pregnancy, a quantitative study	SYD	Leila Gholizadeh	Fiona Orr	
Balding	Kirstie	Doctor of Philosophy	The exploration of midwifery students' perceptions of emotional intelligence and its alignment with the attributes of a 'good midwife': A convergent mixed methods study	FRE	Sadie Geraghty	Amanda Timler	Sally Pezaro
Bourke	Carolyn	Doctor of Philosophy	Development and validation of the End-of-Life Care Assessment Tool in Dementia	SYD	Prof Lynn Chenoweth	Prof Anna Williams	Dr Georgousopoulos
Brown	Melanie	Doctor of Philosophy	The development, implementation, and evaluation of a nationwide online forensic nursing education program for interpersonal violence related presentations in emergency care settings	FRE	Kylie Russell	Tracey Coventry	
Conlon	Darren	Doctor of Philosophy	Confidentiality and risk-actuated disclosure practices of nurses working in mental health care, informed by CCT	SYD	Tim Wand	Toby Raeburn	
Corocan	Frances	Doctor of Nursing	Nursing student and academic staff experiences of learning via escape rooms	SYD	Vasiliki Betihavas	David Geelan (Educ)	
Crossan	Kimberley	Master of Philosophy	Transforming Traditions: Unveiling the Power of Gender-Neutral Language within Maternity	FRE	Sadie Geraghty	Kirstie Balding	
Dadi	Gezaghen	Doctor of Philosophy	Palliative care service provision for people with severe illness in Ethiopia: a mixed methods study	SYD	Annmarie Hosie	Megan Best / Andrew Donkor	Wondwosen Kidane

Surname	First name	Degree	Title	Campus	PS	CS	Industry & CS
Guerin	Ashlee	Master of Nursing Research	Navigating midwifery, learning to be 'with woman': the lived experience of studying midwifery, a feminist study	FRE	Sadie Geraghty	Sheena McClery	
Hindman	James	Doctor of Philosophy	Development of an educational tool to close the theory practice gap in mental health nursing.	SYD	Toby Reburn	Joel Zugai	
Hynes	Laura	Doctor of Philosophy	An Investigation into the Effects of the COVID-19 Pandemic on Nursing and Midwifery Job Satisfaction and Retention in Australia	FRE	Sadie Geraghty	Karen Clark Burg	
Jones	Scott	Doctor of Nursing	The Nurse practitioner role in rural remote WA	FRE	Karen Clark Burg	Cath Josif	
Josey	Matthew	Doctor of Nursing	Critical incident debriefing in the perioperative setting	SYD	Karen Clark Burg	Amanda Graf	
Kennedy	Laura	Master of Philosophy	Preoperative anxiety in patients undergoing elective surgery	FRE	Ben Hay	Jim Codde	
Kotowski	Judith	Doctor of Philosophy	Parents and carers information needs when bottle-feeding infants, a mixed methods study	SYD	Cathrine Fowler	Fiona Orr	
Lowery	Soumaia	Master of Philosophy	Cognitive impairment and Delirium screening in an acute hospital setting: An audit and feedback and quality improvement study towards meeting the Delirium Clinical Care Standard.	FRE SJOGH	Annmarie Hosie	Karen Clark-Burg	Janie Brown
Mallawarachichi	Geetha	Doctor of Philosophy	Describing the impact of investigator-initiated clinical trials in a Western Australian metropolitan health service.	FRE	Dale Edgar	Caroline Bulsara	Melanie Wright
Mwembe	Hope	Doctor of Philosophy	Health outcomes of children who are living in out of home care in metropolitan WA	FRE	Lisa Wood	Brad Farrant / Caroline Bulsara	Alice Johnson

Surname	First name	Degree	Title	Campus	PS	CS	Industry & CS
Narayan	Nitasha	Doctor of Philosophy	Nursing students' clinical placement experience in a residential aged care facility: A comparative study	FRE	Ainslie Robinson	Benjamin Hay	
Norman	Tania	Master of Nursing Research	Peristomal skin complications: what are the contributing factors and can they be prevented	FRE	Gail Ross Adjie	Leanne Monterosso	Kerrilyn Carvell
Nunes	Natasha	Doctor of Nursing	Asceptic practices in nursing care	FRE	Gail Ross Adjie	Amanda Graf	
Oma	Jessica	Master of Philosophy	Midwives' experiences and perceptions of conducting routine antenatal appointments via telehealth.	FRE	Sadie Geraghty	Sheena McChlery	
Pratt	Sarah	Master of Philosophy	Exploring midwives' perspectives on the safe provision of water immersion for women trialling a vaginal birth after caesarean section (VBAC) in Western Australia	FRE	Sadie Geraghty	Kirstie Balding	
Raja	Natasya	Doctor of Philosophy	Patient controlled analgesia in emergency departments: A mixed methods feasibility study	FRE	Gail Ross Adjie	Leanne Monterosso	Caroline Bulsara / Max Bulsara
Robinson	Ainslie	Doctor of Philosophy	Leading bachelor-level curriculum in nursing from the perspective of "future proofing" nursing education arising from national recommendations: A classic Grounded Theory study	FRE	Karen Clark Burg	Amanda Timler	
Sam	Sonnu	Master of Philosophy	Compassion Fatigue among Nurses working in the Emergency Department at a Western Australian Metropolitan Tertiary Hospital	FRE	Cath Josif	Caroline Bulsara	
White	Claire	Master of Philosophy	Exploration of barriers that may prevent women accessing midwifery led care, within rural and regional locations within Western Australia	FRE	Sadie Geraghty	Sheena McChlery	

# APPENDICES

## Appendix A: Revised SoNM Strategic Research Plan [Strategy based on 2020 – 2023]

OBJECTIVE	MEASURES OF SUCCESS	CURRENT STATUS / PRC COMMENTS	SUGGESTED ACTIVITIES	ACTIONS 2023-24
<ul style="list-style-type: none"> <li>• <b>Raise the research profile of staff and students</b></li> </ul>	<ul style="list-style-type: none"> <li>• Increase publication rate and provide support for staff</li> <li>• Increase in staff research outcomes through established management of research outputs</li> </ul>	<ul style="list-style-type: none"> <li>• One of the suggested areas for growth is publication rate. We have a number of PhD graduates who have not yet published their work nor do they have a research path after being awarded an HDR.</li> <li>• Thesis by publication needs to be considered in balance with requirement for publication before examination</li> </ul>	<ul style="list-style-type: none"> <li>• Writing retreats</li> <li>• Workshops over lunch hour</li> <li>• Resources online</li> <li>• Assisting staff to build a research profile</li> <li>• Providing research skills capacity building events</li> <li>• More openly celebrating wins and other achievements. E.g updates on our school web presence.</li> </ul>	<ul style="list-style-type: none"> <li>• Reactivate the Blackboard (Teams) research resources pages</li> <li>• Invite library input into developing research profiles for staff</li> <li>• Set up an academic mentoring program with adjuncts</li> <li>• A straightforward 'write a paper' series of workshops</li> </ul>
<ul style="list-style-type: none"> <li>• <b>Engage in research that is authentic and improves health outcomes</b></li> </ul>	<ul style="list-style-type: none"> <li>• Focused topics with recognised researchers with track record in the field combined with novice researchers.</li> </ul>	<ul style="list-style-type: none"> <li>• There are a number of ways to raise capacity within the school without the requirement of a large budget. This includes generating an informal research culture to nurture potential early career researchers as well as drawing on the expertise of those already in the school. For example, it is possible for staff and HDR students</li> </ul>	<ul style="list-style-type: none"> <li>• Example of a scheduled informal meeting (Arts&amp; Science and SoNM RC) to talk about synergies and cross disciplinary opportunities for research.</li> <li>• Mentoring scheme for research active or early</li> </ul>	<ul style="list-style-type: none"> <li>• SONM Academic development scheme - semi structured mentoring program.</li> <li>• Informal morning tea / soiree for academics interested in research within the faculty. Perhaps have a focused theme</li> </ul>

OBJECTIVE	MEASURES OF SUCCESS	CURRENT STATUS / PRC COMMENTS	SUGGESTED ACTIVITIES	ACTIONS 2023-24
		<p>to look at publication options as well as the peer review clinical and high impact journals. Informal gatherings where staff and students can connect and share challenges they have overcome would also be effective. Consider setting up a mentoring scheme to set goals and provide mentoring.</p>	<p>emerging researchers amongst our staff to have a mentor to develop their research profile.</p>	<p>(e.g. last time it was 'Meet the IHR staff' with afternoon tea.</p>
<ul style="list-style-type: none"> <li>• <b>Create successful partnerships with key industry stakeholders domestically and internationally</b></li> </ul>	<ul style="list-style-type: none"> <li>• Foster partnerships with industry and research colleagues to undertake research that is aligned to national health research priorities and global public health initiatives</li> </ul>	<ul style="list-style-type: none"> <li>• There is a degree of focused research within the SONM. However, we need to extend our focus to encompass broader cross disciplinary research as well as “pure nursing” research topics. Nurse academics have much to contribute in the wider field of research across a number of health disciplines.</li> </ul>	<ul style="list-style-type: none"> <li>• Liaise with consumer representative, at UNDA to develop a plan for an industry focused event to meet with SONM research staff and interested academic staff to showcase our potential. The UWA Healthy Ageing group do this effectively annually around a symposium format.</li> </ul>	<ul style="list-style-type: none"> <li>• Sydney is already hosting an industry partner UNDA evening – Frem to host similar concept combined with a nursing &amp; midwifery focused research symposium</li> <li>• Nursing scholarships in partnership.</li> </ul>
<ul style="list-style-type: none"> <li>• <b>Attract competitive and non-competitive funding to support research</b></li> </ul>	<ul style="list-style-type: none"> <li>• Academic staff applying for grants inviting other novice research staff onto the team.</li> </ul>	<ul style="list-style-type: none"> <li>• This remains our biggest challenge. Do we need to have many grant applications? Perhaps only for those who wish to go down the funding route. This would also include mentoring of early career researcher staff as part of larger grant application. In addition, small seeding grants need to be collated and facilitated by more senior academics within the school.</li> </ul>	<ul style="list-style-type: none"> <li>• Information sessions and a workshop on the 'art of grant writing'.</li> <li>• Local bursaries/awards – alternatives to the “Big Funders”</li> <li>• Working on grants, informal ideas sharing network within and outside SONM.</li> </ul>	<ul style="list-style-type: none"> <li>• CORP can develop into an ideas sharing forum within each CORP group.</li> <li>• Could this even become a CORP group in itself?</li> </ul>

OBJECTIVE	MEASURES OF SUCCESS	CURRENT STATUS / PRC COMMENTS	SUGGESTED ACTIVITIES	ACTIONS 2023-24
<ul style="list-style-type: none"> <li>• <b>Provide opportunities for staff and students to engage in research</b></li> </ul>	<ul style="list-style-type: none"> <li>• Implementation of a school research hub</li> <li>• A community of research expertise and practice</li> <li>• Improve connection of adjuncts and research students with the School</li> <li>• Engage HDR and HDR alumni in the supervision and mentoring of research students</li> </ul>	<ul style="list-style-type: none"> <li>• Research scholarships and fellowships would enable staff to complete a research project and to fund assistance with completing a research study. It is possible that a mentoring scheme with more senior academics within the school would help this process. There is a tendency to silo research without providing more junior academic staff with the opportunity to build a research profile.</li> <li>• A number of targeted seminars and possibly a symposium to showcase the work within the school would raise our profile and invite collaboration both internally within schools and also externally. A symposium has been planned for 2023-24.</li> </ul>	<ul style="list-style-type: none"> <li>• A web based updated resource listing current funding opportunities – link in with the research office</li> <li>• Linking into current research areas of interest both internal and external.</li> <li>• Web based resources page providing information</li> <li>• Advice and guidance on all area of nursing and health research</li> <li>• Opportunities to attend conferences of relevance</li> <li>• Inviting external and internal academic staff to connect with HDR students.</li> </ul>	<ul style="list-style-type: none"> <li>• The Research Bites seminar series.</li> <li>• Conference registration can be expensive –staff / adjuncts / students providing feedback sessions on attended.</li> <li>• Options to rehearse conference presentations those who wish to do so.</li> <li>• Provide a series of recorded sessions at school-based level of how to supervise and what students</li> <li>• should expect from a supervisor</li> <li>• Community Of Research Practice groups – build on these</li> <li>• Drop in sessions for students</li> </ul>

**Appendix B: SoNM Student and Staff Feedback for Research Strategy**

**STAFF AND STUDENT FEEDBACK  
FOR SoNM RESEARCH STRATEGY  
2023  
RESULTS AND RECOMMENDATIONS**

[caroline.bulsara@nd.edu.au](mailto:caroline.bulsara@nd.edu.au)  
[jane.gaspar@nd.edu.au](mailto:jane.gaspar@nd.edu.au)



## Background to survey and workshop

The survey and face to face (student) workshop was based upon the proposed School of Nursing and Midwifery Strategic Research Plan from 2024 onwards. The SONM plan was based upon the University of Notre Dame overall Strategic Plan.

Given the challenges of workload commitments, a suitable time to engage a larger number of staff in a workshop was not possible. Thus, an online survey based upon the key strategic areas (Appendix B1) was created using Qualtrics which as subsequently sent out via email to all staff. Overall, 26 staff members completed the survey.

Higher degree by research students were also invited to nominate if they chose to (i) respond by email in writing to 3 questions based upon the SONM strategic plan (Appendix B2) (ii) participate in an online forum based upon the questions for the strategic plan and (iii) participate in both. Overall, 7 HDR students provided feedback across all methods of providing information. A transcript of the workshop was obtained and analyzed alongside the written responses.

## Key recommendations

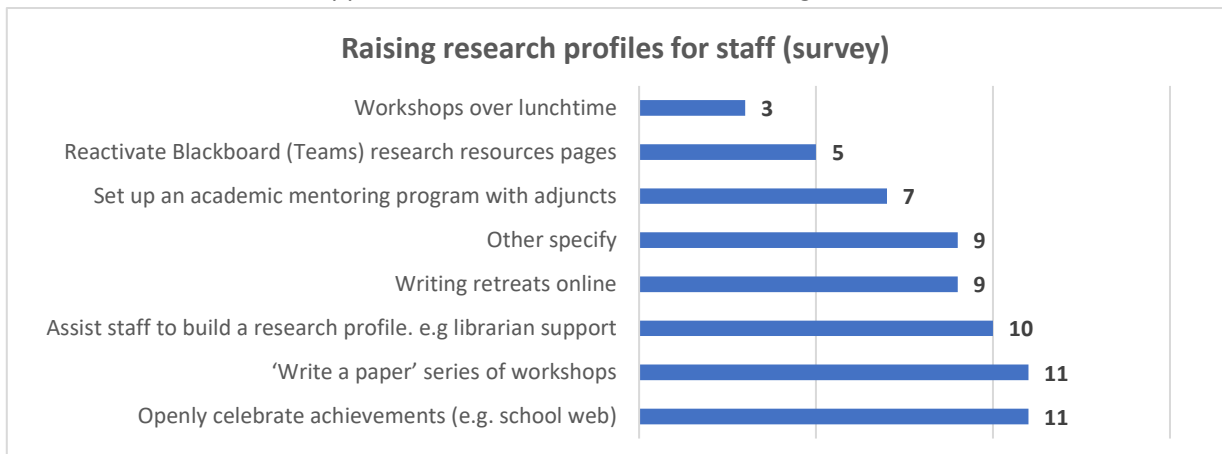
Derived from results of consultation, several key recommendations are suggested to facilitate the development of research capacity and success of SoNM staff and students:

1. Disseminate a monthly calendar of research events to staff, students, and external collaborators.
2. Offer grant writing workshops with NHMRC/ARC assessors and successful applicants.
3. Establish a mentoring program that includes tailored workshops and partnering of protégés and mentors.
4. Host several half-day research symposiums each year and invite undergraduates, adjuncts, industry.
5. Offer financial incentives for publishing and financial support to attend/present at conferences.

## Detailed consultation results

### Ideas to raise research profiles, publication rates, and research outputs:

- Hold writing workshops and retreats (survey count =20), and assign writing as a dedicated, work-modelled activities with output monitored.
  - For students, a "straightforward 'write a paper' series of workshops" would reduce the stress of HDR work (student interview).
- More openly celebrate achievements (survey count=11).
- Offer librarian assistance with building their research profile (survey count=11) and publishing.
- Undertake projects, systematic reviews etc during "off-peak times" (e.g. Christmas period) to allow teaching staff tend a chance to get involved.
- Launch an academic mentoring program with adjuncts (survey count=7).
- Create partnerships between internal/external researchers of similar interests, complementary skills who share project workload and authorship. Have these teams led by experienced researchers who assign roles, tasks and create publications.
  - Senior staff bring one or two ECRs in as associate investigators to build their research profiles and careers (group interview).
- Provide monetary incentives for publications.
- Submit to less known publications with a better chance of being published.
- Provide financial support for Research Assistants to be assigned to the school.

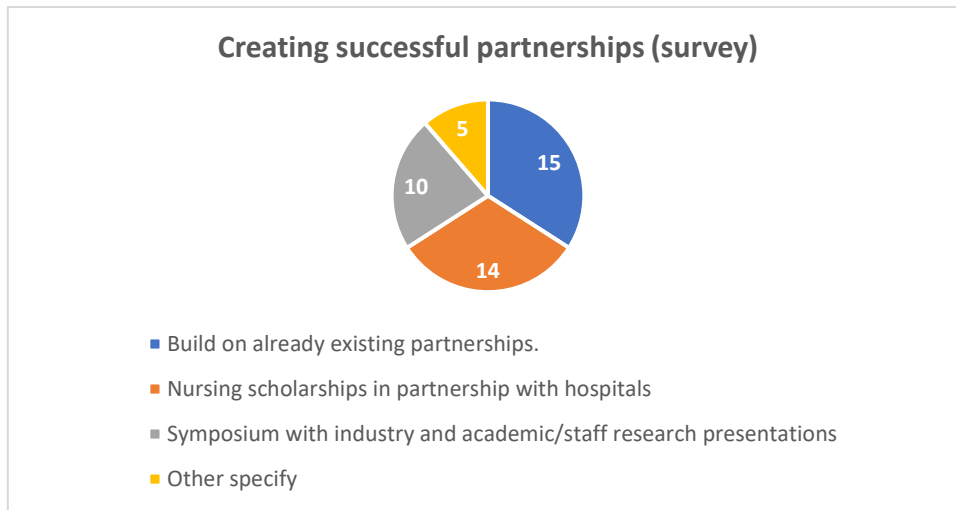


### Ways to create successful partnerships

Specifically, with domestic/ international stakeholders that align with national health research priorities and global public health initiatives:

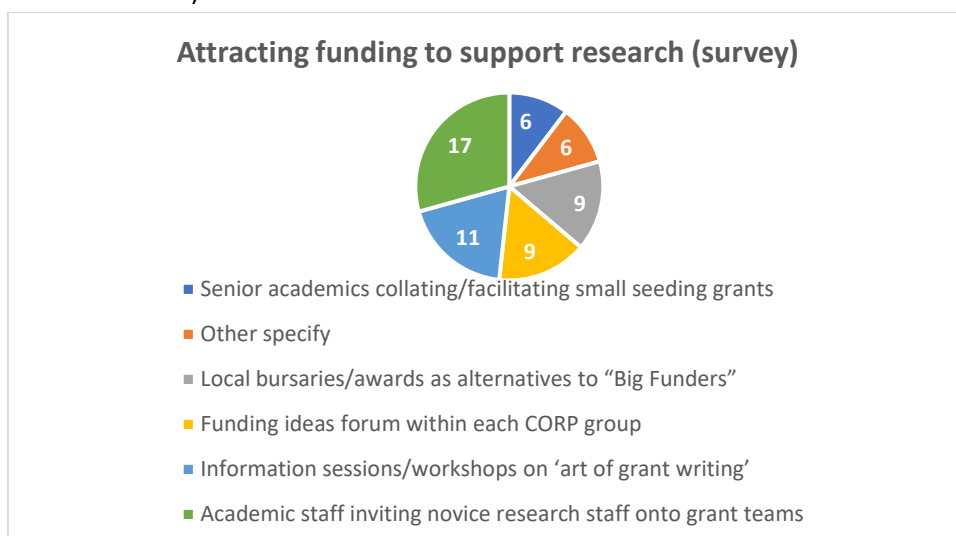
- Build on existing partnerships (survey count =15) and create nursing scholarships in partnerships with hospitals (survey count =14).
- Have successful NHMRC/ARC research present their tips for successful grants.
- Create partnerships with health facilities, including and encourage clinical staff to engage with academics to undertake Qis that can develop research projects.
- Collaborate with external national and international industry and institutions to hold online symposiums (survey count=10), systematic review writing events, and journal discussions.

- Link with industry and other universities in a more collaborative way by sharing research expertise in joint projects.
- Foster a multidisciplinary approach to research – as in clinical practice – to enhance learning across disciplines/countries and benchmarking opportunities (student interview).



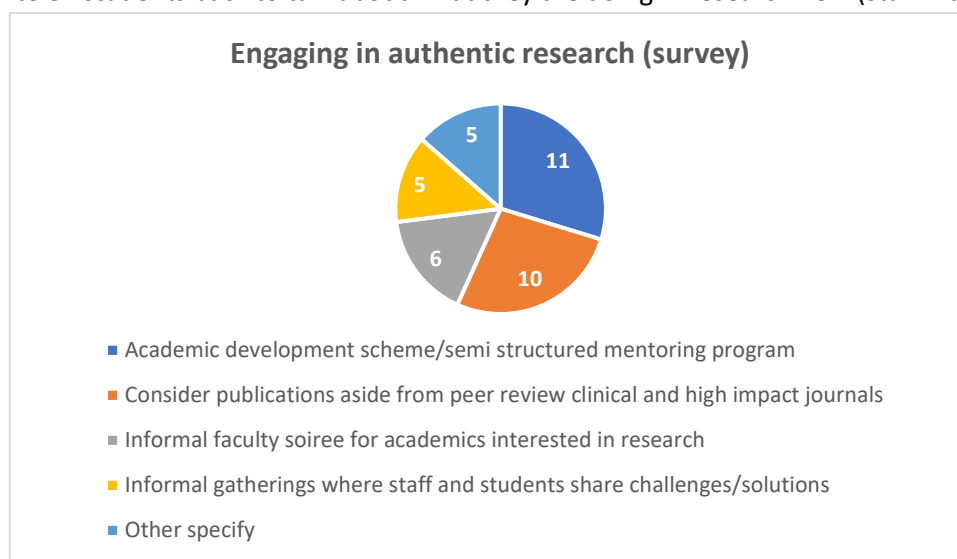
#### Methods for attracting competitive and non-competitive research funding:

- Require academic staff applying for grants to invite novice research staff onto their teams (survey count=17).
- Hold workshops on grant writing (survey count=17) and have NHMRC/ARC grant reviewers to speak on what reviewers look for in successful applications.
- Create a position filled by an ECR whose primary role it is to search for grants and support writing/application process.
- Secure local bursaries and university small research grants or funding opportunities as opposed to “big funders”.
- Encourage CORP activity by setting requirements for grant applications (e.g. one per year) and holding funding idea forums within each CORP.
- Funding (small or large) is key to producing valid research that can solve the problems of the community, industry, academic institutions, and research institutes, at the grass-roots level (student interview).



### Ways to engage in authentic research that improves health outcomes:

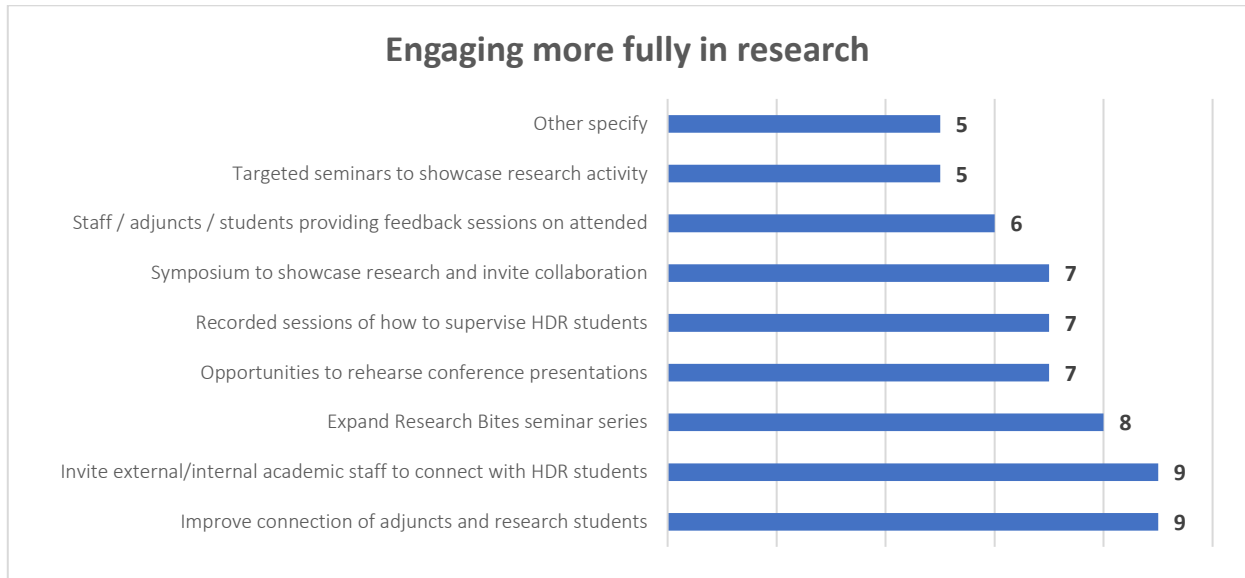
- Establish an academic development scheme encompassing detailed goals and mentorships (survey count:11).
  - Similar to UWA’s Academic Mentoring Scheme that includes formal workshops along with partnering of people according to their area of interest and expertise (staff interview).
  - Mentoring systems facilitate research development, grant submissions, and publishing (staff interview).
  - Senior academics providing guidance is so important in nurturing novice researchers (student interview).
- Provide staff with dedicated research hours.
- Make Notre Dame’s outcome matrix known to staff and aligned to research strategy.
- Improve research systems and secure sufficient research staff, including a team of ethics officers.
- Invite ex-students back to talk about what they are doing in research now (staff interview).



### Opportunities for staff and students to engage more fully in research:

- Host research symposiums/ seminars (survey count=20) and extend invitation to undergraduate students to inspire the next generation of HDR students.
  - Expand regular meetings like Research Bites and Community of Practices that get students and staff together to promote research and facilitate mentoring.
  - Run in-person/virtual sessions with 5 minute presentations by researchers, students, industry on their interests/activities and then have breakouts to get ideas going.
  - Attract HDR students with an annual research symposium to boost interest in research and Notre Dame.
- Improve connections of academic staff and adjuncts with students (survey count=18).
- Provide financial support for staff and students to attend conferences opportunities.
  - Conferences provide ECRs the ability to network and the opportunity to be motivated by expert researchers and absorb their knowledge and passion (student interview).
- **Protect research time within the workload model** as many staff struggle to undertake their research on top of teaching requirements.

- Need to better promote events and get the word out ahead of meetings with a monthly calendar of research events for dissemination (staff interview).
- Provide opportunities for presenters to rehearse their conference presentations.
- Provide small scholarships for students to complete studies (student interview).
- Offer Community of Research Practice drop-in sessions (student interview).



#### Main challenges for engaging in research:

- Time/Workload that factors in the whole project timeline (including grant writing, data collection and analysis, publishing etc).
- Funding, including conference costs.
  - Need a small budget or sponsorship or grants (staff interview).
- Inconvenient evening time of PhD classes.
- Inadequate support systems in ethics, P&C, finance, IT, along with attrition of research-knowledgeable staff.
- Ineffective, constantly changing, poorly communicated internal processes.
- Lack of 'championing' of research.
- Increased difficulty in getting published.
- Knowledge regarding researching skills and programs like Qualtrics.
- Limited "available" mentors/researchers.

## Appendix B1: Staff survey

### SONM research strategy staff feedback

Q8. Please indicate your status within the school. I am...

- Academic staff only  
 Academic staff and HDR student  
 Prefer not to say  
  Other specify

### Each question relates to a pillar for research strategic growth

Q1. One of the suggested areas for growth is to increase publication rate. We need to also provide support for staff and opportunities to achieve research outputs. Also, we need to increase overall staff research outcomes through established management of research outputs.

Please tick as many as necessary in response to suggested ideas for raising research profiles for staff.

- |   |   |
|---|---|
| <input type="checkbox"/> Writing retreats online  | <input type="checkbox"/> Reactivate the Blackboard (Teams) research resources pages                                   |
| <input type="checkbox"/> Workshops over lunchtime   | <input type="checkbox"/> A straightforward 'write a paper' series of workshops  |
| <input type="checkbox"/> Set up an academic mentoring program with adjuncts                 | <input type="checkbox"/> More openly celebrating wins and other achievements. E.g updates on our school web presence. |
| <input type="checkbox"/> Assisting staff to build a research profile. e.g librarian support | <input type="checkbox"/> Other specify <input type="text"/>   |

Q2. The University is seeking to create successful partnerships with key industry stakeholders domestically and internationally. Aim to foster partnerships with industry and research colleagues to undertake research that is aligned to national health research priorities and global public health initiatives.

Please tick as many as necessary in response to suggested ideas for creating successful partnerships.

- |   |  |
|---|--|
| <input type="checkbox"/> Hold a symposium which combines industry presentations with academic and staff research presentations as networking. | <input type="checkbox"/> Build on already existing partnerships. |
|---|--|

- |   |   |
|---|---|
| <input type="checkbox"/> Nursing scholarships in partnership with hospitals | <input type="checkbox"/> Other specify <input type="text"/> |
|---|---|

Q3. Attract competitive and non-competitive funding to support research. This remains our biggest challenge.

Please tick as many as necessary in response to suggestions for attracting research funding.

- |   |   |
|---|---|
| <input type="checkbox"/> Academic staff applying for grants inviting other novice research staff onto the team.               | <input type="checkbox"/> Local bursaries/awards – alternatives to the "Big Funders"   |
| <input type="checkbox"/> Small seeding grants need to be collated and facilitated by more senior academics within the school. | <input type="checkbox"/> Communities Of Research Practice (CORP) can develop into a funding ideas forum within each CORP group. |
| <input type="checkbox"/> Information sessions and a workshop on the 'art of grant writing'.                                   | <input type="checkbox"/> Other specify <input type="text"/>   |

Q4. Engage in research that is authentic and improves health outcomes. There are a number of ways to raise capacity within the school without the requirement of a large budget. This includes generating an informal research culture to nurture potential early career researchers as well as drawing on the expertise of those already in the school. Please tick as many as necessary in response to suggestions for engaging in research that is authentic.

- |  |   |
|--|---|
| <input type="checkbox"/> Staff and HDR students to look at publication options aside from the peer review clinical and high impact journals.       | <input type="checkbox"/> Informal morning tea / soiree for academics interested in research within the faculty. |
| <input type="checkbox"/> Informal gatherings where staff and students can connect and share challenges they have overcome would also be effective. | <input type="checkbox"/> Other specify <input type="text"/>   |
| <input type="checkbox"/> SONM Academic development scheme to set goals and mentor - semi structured mentoring program.                             |   |

Q5. Provide opportunities for staff and students to engage in research. There is a tendency to silo research without providing more junior academic staff with the opportunity to build a research profile. Please tick as many as necessary in response to suggestions to more fully engage in research.

- |   |  |
|---|--|
| <input type="checkbox"/> Improve connection of adjuncts and research students with the School | <input type="checkbox"/> Inviting external and internal academic staff to connect with HDR students. |
|---|--|

- Expand the Research Bites seminar series.
- A number of targeted seminars to showcase research activity within the school
- Conference registration can be expensive –staff / adjuncts / students providing feedback sessions on attended
- A symposium to showcase the work within the school would raise our profile and invite collaboration both internally within schools and also externally.
- Options to rehearse conference presentations those who wish to do so.
- Other specify
- Provide a series of recorded sessions at school-based level of how to supervise HDR students

Q7. Aside from workload and time factors, please list up to 3 main challenges for you in engaging in research.

Q9. Please use this box to write any other comments that you would like to share about building research capacity.

Powered by Qualtrics

## Appendix B2: HDR student questions based on strategic plan

Hello HDR students,

As promised, I am sending through the research strategic plan for the school. For those of you who also requested a Zoom session to discuss I will email you separately with the link. Thank you to all of you who have showed interest so far. For those of you who have not, it is not too late to give some feedback on the proposed strategic plan for research within the School of Nursing & Midwifery! Attached is the new research plan.

Could I ask you to **read through it briefly and respond to me** on the following questions below and send back to me **via email** when you have a little time (deadline 17th July)?

- **Which of these areas do you feel is most important for nursing & midwifery research in the next few years and why?**
- **What would you personally be most likely to be interested in and why?**
- **What is missing or could be included that would be of value to you in terms of research and HDRs?**

Looking forward to hearing from as many of you as possible by email. Remember, it is your School strategic research plan too! As mentioned, **the deadline for written feedback is 17th July.**

**Date:** Wednesday, 21 June 2023 1:36:00 PM  
**Importance:** High

---

Good day everyone,

I hope this email finds you all well. I am hoping to have a **special online [approx. 45 minute] session** with HDR students **regarding our new research strategic plan**. The School level research plan has been drawn from the overarching University of Notre Dame strategic plan. I have drafted some key points already and this has been shared with the School's executive committee recently. The academic staff feedback workshop will be held in early July. This consultation will focus on what you feel is important or has not yet been considered for the plan moving into 2024.

As an integral part of our school and university, now is your chance to have input! I invite you to provide either a written feedback option and / or an online discussion with other HDR students.

If you could please **reply to indicate your interest by replying in the subject line** for my follow up with either:

- Yes written feedback
- Yes online discussion
- Both (written and online)
- Not interested

I will send out the draft plan along with a set of 3 questions for you to consider. If you are also willing to come along to the online session during the week of **Monday 17<sup>th</sup> or Wednesday 19<sup>th</sup> July** to discuss the plan a little more, then please let me know in your reply and I will schedule this via Zoom.

Looking forward to hearing from as many of you as possible. **Remember, it is your School strategic research plan too!**

*Best Regards,*  
*Caroline Bulsara*

Professor Caroline Bulsara



## Appendix C: Research Bites

The highly successful Research Bites Seminar Series has been well supported by the School and more broadly by faculty members. Sessions to date have been varied and well attended. The 2023 schedule was as follows:

<b>Dates</b>	<b>Presenter/s</b>	<b>Topic</b>
Monday, February 27, 2023	<b>Dr Ainslie Robinson</b>	So what? The impact factor of scholarship and research and what reviewers look for...
Wednesday, March 29, 2023	<b>Dr Kate Buchanan</b>	Feminist participatory action research: a PhD journey
Friday, April 28, 2023	<b>Kathryn Stewart</b>	Consumer and Community Involvement Program
Monday, May 29, 2023	<b>Dr Amanda Timler</b>	Effects of cannabidiol-based medication among those living with dementia
Wednesday, June 28, 2023	<b>Rosemary Saunders</b>	Applying the legislation to involve incapacitated adults in health and medical research in Western Australia.
Wednesday, July 26, 2023	<b>Dr Vasiliki Betihavas</b>	Systematic Review how to: do's and don'ts
Monday, August 21, 2023	<b>Masters students (coursework)</b>	Special Masters Student Session
Friday, September 22, 2023	<b>Darren Conlon</b>	Confidentiality and risk-actuated disclosure practices of nurses working in mental health care.
Wednesday, 11 October 2023	<b>Dr Gisselle Gallego</b>	Increasing representation of people with disabilities in the medical workforce: absence to action
Friday, October 27, 2023	<b>Dr Karen Taylor, Prof Max Bulsara</b>	Randomised Control Trials methodology – tips and pitfalls
Thursday, November 9, 2023	<b>Dr Gail Ross-Adjie</b>	Breastfeeding sources of knowledge: Where do Australian midwives gain critical breastfeeding education?
Friday, December 8, 2023	<b>Masters student - Chris Haydock</b>	Mental health literacy among emerging adult males