



Building on the traditions of the past to create a better future.

Fremantle Broome Sydney

Kimberley Transitions: Collaborating to Care for Our Common Home

June 2020, Edition 5.



This year commenced with unprecedented changes to Our Common Home, with Covid-19 taking its toll in so many aspects of individual, community, national and international ways of living with humans and more than human others upon our planet. This is surely a time when transitions towards a newly visioned future is required. Given this setback we did have two exciting outcomes, firstly the launch of our new Kimberley Transitions Logo (see above) and our annual Research Week being held via Zoom presentations, with over 200 participants attending Workshops.



*Millenium Kids

Led by a Ngadju elder, Kimberley Transitions researchers will investigate the emerging field of Indigenous-led Transformative Sustainability Education with Millennium Kids and a group of Ngadju families connected with the Greater Western Woodlands.



Photo: Tamara, Krystal and Jasmin after a photography workshop session for Ngadju young people. Photographer: Brendan Ah Kim.

The innovation in this research is environmental education Aboriginal way. At present this research is on hold due to Covid-19 considerations however will proceed as soon as possible. Funds from a Notre Dame Research Grant will be used for this purpose.

*Community Development for Ecological Conversion.

In late 2019, **Anne Jennings** presented her research at both the ANZ Society of Ecological Economics and the Australian Earth Laws Alliance conferences in Melbourne.



Anne has also finalised a chapter for a book to be published later this year. It showcases community-based projects in Broome that clearly demonstrate local examples of grassroots-driven ecological economics projects. Anne is currently preparing more research publications, as she moves closer to concentrating on writing her thesis at the end of the year.

Kimberley Transitions project is based at Nulungu Research Institute, located on Yawuru Country, Broome. Kimberley Indigenous cultural knowledges, traditions, languages and caring for Country wisdom – and revitalisation – are central to *Kimberley Transitions* work.

Sponsors: Catholic Diocese of Broome; The University of Notre Dame Australia, Knights of the Southern Cross WA, Catholic Education Office, St. Marys College, and supported through the Australian Government Research Training Program Scholarship scheme.

*Transformative learning: Integral Ecology at School.



Jacqui Remond has presented her proposal and is now a candidate for doctoral research in education. She is, however, pausing the data collection

phase of her study due to the corona pandemic. As Jacqui explains: the world is now in crises, and we're invited to come together in spirit and reflect upon how we have already made changes for the common good. Earth Day gave us the opportunity to celebrate the awesome beauty of our home, planet Earth. Let's continue to listen to our mother Earth and be people who are mindful of her need to rejuvenate, restore and heal. Taking care of our common home – one day, one place, one person at a time.

Late News: Pope Francis has instigated the Vatican COVID-19 Commission and Jacqui has been appointed to one of the Commission's Taskforces – on Ecology. **Congratulations Jacqui from us all.**

*Cultural Actions: Sustaining Aboriginal Lives

Dr Anne Poelina's study, in collaboration with the Martuwarra Fitzroy River (MFR) Council, is progressing the National Heritage Conservation and Management Plan for the Fitzroy River. The MFR Council is finalising their documentary *The Serpents Tale* and have dedicated it to His Holiness Pope Francis - because of his leadership and love for the Amazon River.



Photo: Martuwarra Fitzroy River Council (Anne Poelina centre front).

During this time of growing climate crisis and uncertainty, water allocation and water scarcity are a concern nationally and globally. This collaboration is being strengthened through a partnership with the Australian National University Water Justice Hub (Mardoowarra - Fitzroy River). Anne's work has resulted in various published papers, to be listed on our website www.nd.edu.au/research/traditions soon.

*Vale Kevin Smith

Kevin Smith was an enthusiastic member of Broome Transitions, and supported its evolution into today's Kimberley Transitions project. Amongst his many skills Kevin was a talented photographer who donated wonderful landscape photos for our website. Kevin's support of Kimberley Transitions is appreciated and gratefully acknowledged.

*Becoming Family with Place

A group of *Kimberley Transitions* researchers have produced a pedagogy called: 'becoming family with place'.

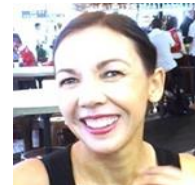


Their innovation is the use of Indigenous-led Transformative Sustainability Education. They have developed concepts such as learning for regenerative futures, which requires ongoing partnerships between learning institutions and Aboriginal organisations. One peer-reviewed publication is now 'out' and another is expected soon. This group includes Sandra Woollorton, Anne Poelina, Len Collard, Pierre Horwitz, David Palmer, Catrina Aniere, Peta White, Marilyn Palmer, Barbara Bynder and Sandra Harben.

*Economic, social and cultural sustainability for West Kimberley's Indigenous communities.

Arjati (Ari) Schipf is currently in writing mode.

She was due to attend the KALACC Directors meeting in March at Warmun Community, following up with Senior Kija Women, regarding plans for a



Kimberley wide women's gathering, however that is on hold due to the Corona virus. Ari is currently supporting KALACC, responding to the potential Kimberley impacts of Covid-19.

The **Kimberley Transitions** project is part of an international [movement of communities](#).

Your involvement is encouraged and welcomed. Contact the Kimberley Transitions Coordinator on:

anne.jennings@nd.edu.au

Please visit our website:

www.notredame.edu.au/research/transitions