



THE UNIVERSITY OF NOTRE DAME AUSTRALIA  
**STUDY ABROAD 2026**

## 5-Star Ratings\*



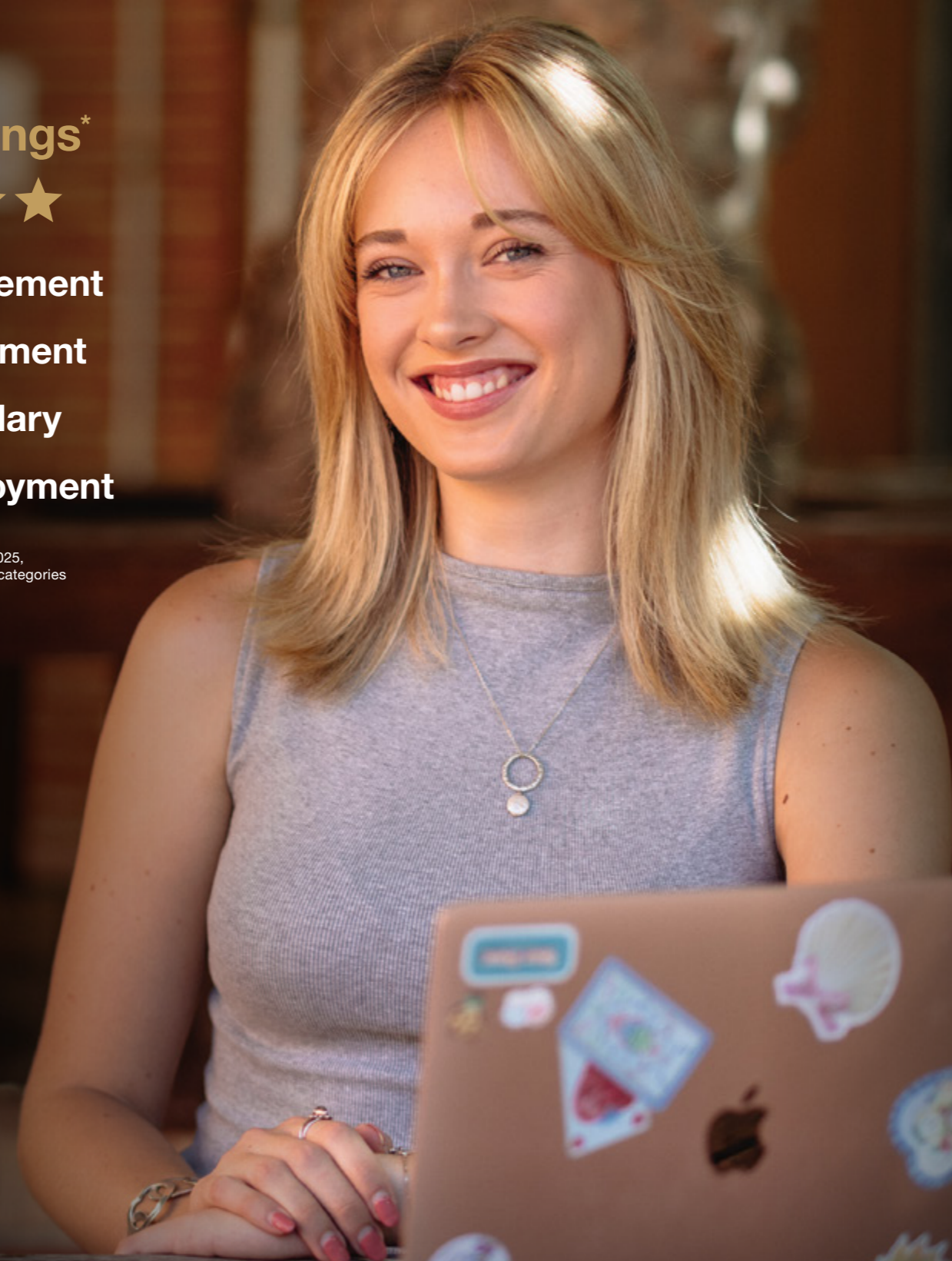
Learner Engagement

Skills Development

Graduate Salary

Full-Time Employment

\*Good Universities Guide 2025, undergraduate and postgraduate categories



# Study abroad at the University of Notre Dame Australia

The University of Notre Dame Australia is a national university, with campuses in Perth, Broome and Sydney.

As an international Study Abroad or Exchange student, we welcome you to join our vibrant study community, which consists of around 12,000 students.

Our students are our number one priority. We take great pride in valuing and educating the whole person – the academic, social, physical and spiritual dimensions of each student. In doing so, we encourage our students to thrive and make important contributions to our communities, both locally and abroad.

Our degrees are highly practical, with embedded professional workplace experience. You benefit from the knowledge and skills of our lecturers who are experts and leaders in their fields, and you boost your employability by building professional networks via internships and work placements.

Our Study Abroad and Exchange Program will allow you to experience the best of Australian life, together with a practical education that is highly rated by our graduates.

**We look forward to welcoming you to the University of Notre Dame Australia.**

## Acknowledgment of Country

The University of Notre Dame Australia is proud to acknowledge the traditional owners and custodians of this land upon which our University sits. The University acknowledges that the Fremantle Campus is located on Wadjuk Country, the Broome Campus on Yawuru Country and the Sydney Campus on Gadigal Country.

## 5 reasons to choose the University of Notre Dame Australia



**Boost your employability**



**Practical degrees with professional workplace experience**



**Expert lecturers and industry connections**



**Safe and accessible campuses**



**Extensive network of international alumni across 68 countries worldwide**



# 01

## Discover

Introduction	3
<b>Our Campuses</b>	
<b>Sydney</b>	<b>6</b>
Why Sydney?	6
Things to do in Sydney	7
Campus	8
Accommodation and costs of living	12
<b>Perth</b>	<b>16</b>
Why Perth?	16
Things to do in Perth	17
Campus	18
Accommodation and cost of living	20
<b>Student Life</b>	
Choose your courses	22
Student support and student life	24

# 02

## Apply

How to apply	26
2026 Key dates	28
Overseas Student Health Cover	29
The University of Notre Dame Australia Credit Point System	29

# LOCATION SYDNEY

## TOP 5 reasons to love Sydney



It's safe and secure



Its economic prosperity



A great lifestyle and climate



Well-connected



A multicultural, international city



**AVERAGE TEMPERATURE**  
(low-high)\*



**Spring**  
September to November  
11–23°C (51.8–73.4°F)



**Summer**  
December to February  
18.6–25.8°C (65.5–78.4°F)



**Autumn**  
March to May  
14.6–22.2°C (58.3–72°F)

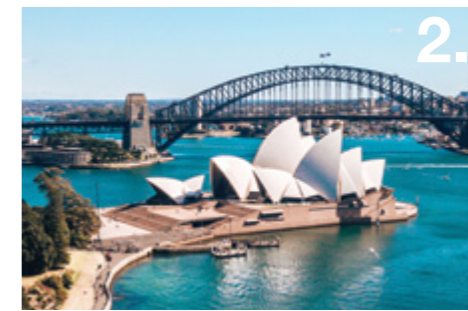


**Winter**  
June to August  
8.8–17°C (47.8–62.6°F)



**FLIGHT TIME TO/FROM SYDNEY**  
(hours)

Beijing	14
Colombo	13
Dhaka	14
Dubai	14
Hong Kong	9
Delhi	15
Jakarta	8
Johannesburg	14
Kathmandu	15
Kuala Lumpur	8
Manila	8
Nairobi	23
Singapore	8
Perth	5



## 10 things to do in Sydney

### 1. Harbour Bridge

Do a Bridge Climb and take in the views of the harbour city.

### 2. Opera House

Enjoy a musical or theatrical performance.

### 3. The Rocks

Teeming with stories from Sydney's colonial past, the Rocks is also home to lovely niche markets, plus an array of restaurants, boutique shops and bars, and is walking distance from the CBD.

### 4. Discover Darling Harbour

Visit Sydney Aquarium, the National Maritime Museum, restaurants, bars and cafés along King Street Wharf and Cockle Bay. Plus, you can enjoy the beauty of Darling Harbour illuminated with artistic light displays during the Vivid Sydney Festival each year.

### 5. Tour the museums and galleries

Sydney is home to a huge range of art galleries and museums, including the Art Gallery of NSW, Sydney Museum and Australian Museum.

### 6. Bondi Beach

Perhaps Sydney's most iconic beach, Bondi is also home to an enormous array of cafés and restaurants to keep you entertained.

### 7. Surry Hills

From cafés, restaurants, bars, cinemas and other entertainment venues, as well as markets and boutique retail shops, the trendy, inner-city suburb of Surry Hills will never leave you with nothing to do.

### 8. Visit Manly Beach

Catch the ferry across from the CBD and spend a day enjoying some of Sydney's most beautiful coastal scenery, and eating fish and chips on the beach.

### 9. Taronga Zoo

See a huge selection of animals from Australia and across the world while enjoying spectacular views of Sydney.

### 10. The Blue Mountains

Catch a train to the Blue Mountains and see the Three Sisters at Echo Point Lookout for a beautiful and enjoyable day trip out of the city.



\*Australia.com [australia.com/en/facts-and-planning/weather-in-australia/sydney-weather.html](https://australia.com/en/facts-and-planning/weather-in-australia/sydney-weather.html)

Please note: The above flight times are estimates and are subject to changes due to individual airlines. Students should use this as a general guide only. Some of these flight times might be via another destination (or transit).

Image: Opera & Panorama by lhboucalt – stock.adobe.com

# SYDNEY BROADWAY CAMPUS

Featuring heritage buildings and leafy courtyards, Notre Dame's Broadway Campus provides a welcoming social hub in the heart of a bustling city.



## BROADWAY CAMPUS

**DARLING HARBOUR**  
Eateries, shops, museums and entertainment venues

**SYDNEY HARBOUR BRIDGE**

**SYDNEY CENTRAL BUSINESS DISTRICT**  
Offices, shops, eateries and nightlife

**TARONGA ZOO**  
Over 400 animals from Australia and around the world

**BROADWAY SHOPPING CENTRE**  
Supermarkets, department stores, over 100 specialty shops, food court, cafes and cinema

**CENTRAL PARK MALL**  
Supermarket, specialty shops, eateries and cinema

**CENTRAL STATION**  
Australia's largest station with bus, light rail, metro and train services to all areas of Sydney as well as national services



## Vibrant city life

Notre Dame's Broadway Campus is located in the colourful inner-city suburb of Chippendale among Sydney's most vibrant neighbourhoods. Nearby hotspots include:

- Broadway Shopping Centre
- Hoyts Cinemas
- Over 100 specialty outlets
- Central Park Mall
- Sydney's famous Spice Alley
- Palace Cinemas
- Glebe
- Newtown
- Sydney CBD

## Schools

The University has an array of buildings located throughout Chippendale to accommodate our growing student population, and the recent acquisition of the adjacent Blackfriars site will substantially expand our campus. The Broadway Campus is home to our School of Law & Business, School of Arts & Sciences, School of Philosophy & Theology and School of Education.

Starting in 2026, we will be relocating our Nursing and Midwifery programs to a fully refurbished facility on our expanded Broadway Campus.

## Transport

Minutes from the Sydney CBD, our Broadway Campus is situated on multiple bus routes, and is just a short walk from both train, metro and light rail stations.

- BUS | Parramatta Road**  
Buses to and from the city every few minutes
- TRAIN | Central Station (10-min walk)**  
Services to all areas of Sydney  
National services also available
- LIGHT RAIL | Central Station (10-min walk)**  
Services to Darling Harbour and the Inner West
- METRO | Central Station (10-min walk)**  
Services to Bankstown, West and North West Sydney

# SYDNEY DARLINGHURST CAMPUS

Notre Dame's Darlinghurst Campus is minutes from the Sydney CBD and the cultural centres of Surry Hills and Paddington.



**KINGS CROSS STATION**  
Major station with train services to all areas of Sydney as well as national services

**MUSEUM STATION**  
Heritage-listed station on the city circle route with train services to western and southern suburbs

**SYDNEY CENTRAL BUSINESS DISTRICT**  
Offices, shops, eateries and nightlife

**SYDNEY HARBOUR BRIDGE**

**SYDNEY OPERA HOUSE**

**ST VINCENT'S HOSPITAL**  
A leading Sydney hospital and research facility

**DARLINGHURST CAMPUS**

**OXFORD STREET**  
Retail and restaurant hub with buses to and from the city and eastern suburbs

## Vibrant city life

Just metres from St Vincent's Hospital, the Darlinghurst Campus is home to our future health experts. Nearby hotspots include:

- Darlinghurst and Surry Hills
- Palace Verona Cinemas
- Live music venues
- Galleries
- Cafés
- Sydney CBD (15-min walk)
- Hyde Park
- Sydney Tower
- Queen Victoria Building
- Shops and luxury fashion brands
- Australian Museum
- Art Gallery of NSW
- Royal Botanic Gardens
- Pitt Street Mall
- Bondi Beach (10-min by bus)
- Circular Quay, Opera House, Harbour Bridge and The Rocks (15-min by bus)

## Schools

Notre Dame's Darlinghurst Campus is home to our students who are studying Medicine and Nursing degrees. Here, students have access to excellent facilities including simulated wards and consultation suites.

Notre Dame also has seven clinical schools spread throughout New South Wales and Victoria, giving students the opportunity to develop their skills in both urban and rural healthcare.

## Transport

The Darlinghurst Campus is a short walk from major train stations and is well served by many bus routes.

**BUS | Oxford Street**  
Buses to and from the City and Eastern Suburbs every few minutes

**TRAIN | Kings Cross Station (10-min walk)**  
Services to all areas of Sydney  
National services also available

## Accommodation and cost of living

Accommodation and living costs depend on many factors such as which city you live in, the type of accommodation you choose and your lifestyle preferences.

Cost of living	Sydney weekly costs
Rent per person in shared off-campus accommodation*	\$280–\$735
Groceries and eating out	\$240–\$368
Utilities (gas/electricity)	\$10–\$21
Phone and internet	\$20–\$42
Public transport†	\$40–\$63
Entertainment	\$80–\$158
<b>Total</b>	<b>\$670–\$1,386</b>

### Calculating your total living costs of study

When calculating your total cost of study in Sydney, you should factor in the following:

- Tuition fees
- Visa application fees
- Overseas Student Health Cover (OSHC)
- Flights
- Costs of living (such as those in the table)
- Additional costs associated with or applicable to your studies (such as textbooks, uniforms, immunisations, stationery): visit [notredame.edu.au/study/fees-incidentals](https://notredame.edu.au/study/fees-incidentals) for further information
- Other personal expenses

#### DISCLAIMER

This table details approximate costs that you may incur while studying at the University and living in Sydney. It should be used as a guide only. It's a requirement of the Australian Government that prospective international students demonstrate they have access to at least A\$29,710 a year (as of 26 March 2025) to fund their living costs and additional funds if bringing partners or family. For the latest figures please refer to the Australian Government website: [studyaustralia.gov.au/english/live/living-costs](https://studyaustralia.gov.au/english/live/living-costs)

\*Prices vary depending on the condition of the property, the number of people you share with and the proximity of the accommodation to the centre of Sydney.

†Transport costs will vary depending on how close you live to campus.

All the above are cost estimates using the Insider Guides Cost of Living Calculator.



### Additional study costs

Some degrees have additional costs associated with them. These may vary depending upon the individual courses chosen. These costs are in addition to tuition fees. Examples of incidental (non-tuition) fees include uniforms, specialist equipment, field trips and immunisations.

To view the incidental (non-tuition) fees for a degree please visit [notredame.edu.au/international/fees](https://notredame.edu.au/international/fees)

## Sydney

While the University of Notre Dame Australia does not offer on-campus accommodation in Sydney, options for student accommodation close to campus include rooms in residential colleges, shared student apartments and private rentals.

### Off-campus student accommodation providers

Arundel House  
[arundelhouse.asn.au](https://arundelhouse.asn.au)

Big Hostel  
[bighostel.com](https://bighostel.com)

Iglu Student Accommodation  
[iglu.com.au](https://iglu.com.au)

Link2 Student Living  
[link2.com.au](https://link2.com.au)

UniLodge  
[unilodge.com.au](https://unilodge.com.au)

Sancta Sophia  
[sanctasophiacollege.edu.au](https://sanctasophiacollege.edu.au)

Scape  
[scape.com.au](https://scape.com.au)

St Andrew's College, University of Sydney  
[standrewscollege.edu.au](https://standrewscollege.edu.au)

St Paul's College, University of Sydney (Medical students only)  
[stpauls.edu.au](https://stpauls.edu.au)

Sweet Potato Living  
[sweetpotato.property](https://sweetpotato.property)

### Off-campus private rentals

[flatmates.com.au/sydney](https://flatmates.com.au/sydney)

[view.com.au](https://view.com.au)

[domain.com.au](https://domain.com.au)

[realestate.com.au/rent](https://realestate.com.au/rent)

[studentaccommodationone.com](https://studentaccommodationone.com)



**“This is truly a  
once-in-a-lifetime  
opportunity to be  
able to study and  
live in Australia.”**

*Kathleen*

Study Abroad student  
from the USA

NOTRE DAME UNIVERSITY  
AUSTRALIA

# LOCATION PERTH

## TOP 5 reasons to love Perth



Feel safe and welcome



### A regional (category 2) city

International students who graduate from our Perth Campus with a bachelor's or higher qualification are eligible to access an additional year in Australia on a post-study work visa.<sup>†</sup>



### The Fremantle lifestyle



### A dynamic and vibrant city



### International city with direct flights across the world

<sup>†</sup>[Australia.com.au/australia.com/en/facts-and-planning/weather-in-australia/perth-weather.html](https://australia.com.au/australia.com/en/facts-and-planning/weather-in-australia/perth-weather.html)  
<sup>†</sup>[immi.homeaffairs.gov.au/visas/working-in-australia/regional-migration/eligible-regional-areas](https://immi.homeaffairs.gov.au/visas/working-in-australia/regional-migration/eligible-regional-areas)

Please note: The above flight times are estimates and are subject to changes due to individual airlines. Students should use this as a general guide only. Some of these flight times might be via another destination (or transit).

Image: Elizabeth Quay Blue Hour Cityscape by Sue – stock.adobe.com



**AVERAGE  
TEMPERATURE**  
(low-high)\*



**Spring**  
September to November  
11.7–23°C (53–73.4°F)



**Summer**  
December to February  
17.5–30°C (63.5–86°F)



**Autumn**  
March to May  
13.7–26°C (56.6–78.8°F)



**Winter**  
June to August  
8–19°C (46.4–66.2°F)



**FLIGHT TIME  
TO/FROM PERTH**  
(hours)

Beijing	12
Colombo	7.5
Dhaka	12
Dubai	11
Hong Kong	8
Delhi	14
Jakarta	3.5
Johannesburg	12
Kathmandu	14
Kuala Lumpur	5.5
Manila	11
Nairobi	20
Singapore	5
Sydney	4

### Master's or doctoral international students with school-aged children

Dependants of master's or doctoral students are not required to pay public school tuition fees for accompanying dependant students for the duration of their postgraduate study period. The tuition fee waiver only applies when the visa holders are currently enrolled in full-time postgraduate studies at a recognised Western Australian university. The tuition fee waiver does not apply before or after the study period, for example, an English language program or a bachelor's degree. During this time the dependant is a full fee-payer.

For further information, please visit [Moving to Australia, notredame.edu.au/international/moving-to-australia](https://movingtoaustralia.notredame.edu.au/international/moving-to-australia)



## 10 things to do around Perth

### 1. Discover Fremantle city

Locals affectionately call it 'Freo'. The city is not only home to the University's Perth Campus, but also a charming and eclectic place to discover, with beautiful and historic buildings, waterfront restaurants, cafés, breweries and much more.

### 2. Stroll around Elizabeth Quay

Set on the banks of the Swan River, this beautiful waterfront precinct is the perfect place to take a stroll, stop for a bite to eat or learn about the Dreaming stories of the Aboriginal people.

### 3. Relax in Kings Park

One of the largest inner-city parks in the world overlooking the city skyline and breathtaking Swan River, Kings Park is the perfect spot for you to sit back and enjoy this stunning natural landmark.

### 4. Watch the sunset at Cottesloe Beach

One of 19 pristine beaches lining the city's coastline, Cottesloe is one of Perth's most popular beaches and the perfect place to have an afternoon swim and watch one of the stunning sunsets Perth is famous for.

### 5. Swim at Wadjemup/ Rottnest Island

Just a short ferry ride from Perth or Fremantle, Rottnest Island is a must-see with its picture-perfect beaches and its cute quokkas. Ideal for a day trip or a longer stay vacation.

### 6. Immerse yourself in culture and arts in Northbridge

A dynamic area known for its arts and culture, Northbridge and its restaurants and bars come alive at night. Northbridge is also home to Boola Bardip (WA Museum), the Art Gallery of Western Australia and Heath Ledger Theatre. Each year it is the central hub for Perth's Fringe World Festival and Perth Festival.

### 7. Take a drive to the Swan Valley and sample some of the best wines

Western Australia's oldest wine region is just a 25-minute car ride from the Perth city centre. The Swan Valley is the perfect place to take a Sunday drive, following the Swan Valley Food and Wine Trail to sample award-winning wines and gourmet delights such as cheeses, preserves, ice-cream and chocolate.

### Venture out of Perth

#### 8. Swim with dolphins in Rockingham

Between September and June, you can enjoy the unique experience of swimming with wild dolphins in the sheltered waters of Rockingham, just 40 minutes south of Perth.

#### 9. Take a road trip down south

The Margaret River, Cape Naturaliste and South West region has pristine forests, beaches, wineries and world-class restaurants all waiting to be discovered.

#### 10. Swim with the whale sharks on Australia's Coral Coast

North of Perth is where you will find turquoise waters, pristine islands nestled against wildflowers and a quintessential outback landscape. Drive to the world heritage listed Ningaloo Reef and you could have the once-in-a-lifetime opportunity to swim with the majestic whale sharks, the largest known fish in the world.



# PERTH

30 minutes from the centre of Perth, **Notre Dame's Perth Campus** is located in the port city of Fremantle's West End. Housed in historic buildings with a café on every corner, it boasts both charm and convenience.

**SWAN RIVER**  
Popular for sailing and paddling, with many picnic spots along its banks

**ROTTNEST ISLAND FERRY TERMINALS**

**FREMANTLE TRAIN STATION AND BUSPORT**  
Train services to western suburbs and Perth central business district as well as bus services to all areas of Perth

**FREMANTLE ARTS CENTRE**  
Art exhibitions and classes, cafés, live music events and markets

**PERTH CAMPUS**

**BATHERS BEACH**  
Sheltered beach for swimming, next to cafés, restaurants and bars

**PERTH CENTRAL BUSINESS DISTRICT**  
Offices, shops, eateries and nightlife

**WALYALUP KOORT (TOWN SQUARE)**  
Global food vendors, entertainment venues, supermarket and city library

**FREMANTLE MARKETS**  
Local food, clothes, jewellery, homewares and more

**CAPPUCCINO STRIP**  
Main street of cafés, restaurants and pubs

**ESPLANADE PARK**  
Large shady park home to regular public events

**FREMANTLE HOSPITAL**

**FREMANTLE FISHING BOAT HARBOUR WATERFRONT**  
Seafood restaurants and brewery



## Vibrant city life

Vibrant. Friendly. Inner-city. Instagram-worthy. These are some of the words our students use to describe university life at Notre Dame.

Unwind between classes in our refurbished student hall or relax at the Esplanade Park – a minute's walk from campus. You're never far from a café, and the Cappuccino Strip and Fishing Boat Harbour are home to numerous restaurants. The new Walyalup Koort development hosts an array of eateries and entertainment options including bowling and mini golf. Then there is Bathers Beach, only a few steps from campus, which makes the perfect getaway on those long summer days.

## Schools

Featuring heritage buildings and leafy courtyards, Notre Dame's Perth Campus provides a welcoming social hub in the heart of historic Fremantle. The Campus has around 40 buildings located in the West End to serve our growing student population. The Perth Campus is the foundation Campus and is home to our School of Nursing & Midwifery, School of Health Sciences, School of Medicine, School of Arts & Sciences, School of Law & Business, School of Education and School of Philosophy & Theology.

## Transport

Just minutes from the Fremantle CBD, the Campus is only a short walk from the Fremantle train station and busport. From there, it's a 30-minute train ride to Perth city, with buses running regularly to suburbs across Perth.

## Accommodation and cost of living

Accommodation and living costs depend on many factors such as which city you live in, the type of accommodation you choose and your lifestyle preferences.

Cost of living	Perth weekly costs
Rent per person in shared off-campus accommodation*	\$200–\$420
Groceries and eating out	\$200–\$315
Utilities (gas/electricity)	\$10–\$21
Phone and internet	\$20–\$42
Public transport†	\$30–\$63
Entertainment	\$80–\$158
<b>Total</b>	<b>\$540–\$1,019</b>

### Calculating your total living costs of study

When calculating your total cost of study in Perth, you should factor in the following:

- Tuition fees
- Visa application fees
- Overseas Student Health Cover (OSHC)
- Flights
- Costs of living (such as those in the table)
- Additional costs associated with or applicable to your studies (such as textbooks, uniforms, immunisations, stationery): visit [notredame.edu.au/study/fees-incidentals](https://notredame.edu.au/study/fees-incidentals) for further information
- Other personal expenses

#### DISCLAIMER

This table details approximate costs that you may incur while studying at the University and living in Perth. It should be used as a guide only. It's a requirement of the Australian Government that prospective international students demonstrate they have access to at least A\$29,710 a year (as of 26 March 2025) to fund their living costs and additional funds if bringing partners or family. For the latest figures please refer to the Australian Government website: [studyaustralia.gov.au/english/live/living-costs](https://studyaustralia.gov.au/english/live/living-costs)

\*Prices vary depending on the condition of the property, the number of people you share with and the proximity of the accommodation to the centre of Perth.

†Transport costs will vary depending on how close you live to campus.

All the above are cost estimates using the Insider Guides Cost of Living Calculator.



## Perth

The University of Notre Dame Australia offers various accommodation options for students around our Perth Campus. There are various accommodation options for students around Notre Dame's Perth Campus, including Port Lodge, our on-campus residence, plus shared student apartments and private rentals.

### On-campus residence

Port Lodge  
[residentialhalls@nd.edu.au](mailto:residentialhalls@nd.edu.au)

### On-campus student accommodation providers

Campus Perth  
[campusperth.com](https://campusperth.com)

St Catherine's College  
[stcatherines.uwa.edu.au](https://stcatherines.uwa.edu.au)

St George's College  
[stgc.uwa.edu.au](https://stgc.uwa.edu.au)

St Thomas More College  
[stmc.uwa.edu.au](https://stmc.uwa.edu.au)

Trinity College  
[trc.uwa.edu.au](https://trc.uwa.edu.au)

Murdoch University Village  
[campuslivingvillages.com](https://campuslivingvillages.com)

### Off-campus private rentals

[flatmates.com.au/perth](https://flatmates.com.au/perth)

[view.com.au](https://view.com.au)

[domain.com.au](https://domain.com.au)

[realestate.com.au/rent](https://realestate.com.au/rent)

[studentaccommodationone.com](https://studentaccommodationone.com)

# CHOOSE YOUR COURSES

D I S  
C O V  
E R

Choose your courses from among a wide range of disciplines across our national schools. You can choose courses that are tailored to your home degree or grow your expertise by exploring subjects in an entirely new field of study.

Study Abroad students can select courses from the Study Abroad Course Listing. Visit [notredame.edu.au/study/international-students/semester-abroad-at-unda/courses-for-exchange-students](https://notredame.edu.au/study/international-students/semester-abroad-at-unda/courses-for-exchange-students) for the most up-to-date information on courses (subjects/modules/units).



## Arts & Sciences

The School of Arts & Sciences delivers a practical, ethical and industry-focused education with courses in diverse areas of study such as the liberal arts, communications and media, counselling, computer science and psychology, data analytics, philosophy and Science on offer.



## Education

Education graduates from the University of Notre Dame Australia are highly sought after in the teaching sector. This is thanks to the exceptionally high number of teaching placement hours embedded in our education degrees, which ensure our graduates are job-ready. Our School of Education also offers students a range of Majors and specialisations to choose from in order to diversity their employment opportunities.



## Law & Business

The School of Law & Business aims to deliver career-focused courses that will equip you with the practical skills and knowledge required to adapt and excel in the highly competitive worlds of law and business. Business Majors include accounting, marketing, data analytics, public relations, economics and human resource management.



## Philosophy & Theology

The School of Philosophy & Theology takes a leading role in the exploration and realisation of the University's Objects. Its courses explore the Catholic intellectual tradition, but also encourage students to consider and question the fundamental assumptions we make about life itself.



## Nursing & Midwifery

The School of Nursing & Midwifery produces graduates with a strong service ethos, who are equipped with the knowledge and skills to deliver person-centred health care.



## Health Sciences

Courses in the School of Health Sciences cover a diverse range of topics such as education, early intervention, diagnostics, treatment and rehabilitation. Students can choose to study disciplines and courses including biomedical science, exercise physiology, microbiology and more.

# STUDENT SUPPORT

We're here for you

## Student support



### International Student Support

Our International Student Support webpage contains a collection of important and useful information for international students studying at Notre Dame. With weblinks and information about key dates, fees, academic matters, accommodation, student life and more, it is a valuable resource for all international students: [notredame.edu.au/students/support/international-student-support](https://notredame.edu.au/students/support/international-student-support).



### Student Orientation

There is a lot to explore and discover when first arriving on campus. Orientation, sometimes known as 'O-Week', will not only help you find your way around the University, but also help you meet new people and learn more about life in Sydney or Perth. Orientation Week starts one week before classes commence and attendance is compulsory for all international students, including Study Abroad and Exchange students. Detailed information about Orientation is released closer to the start of semester via the Getting Started pages on our website, [notredame.edu.au/study/getting-started](https://notredame.edu.au/study/getting-started).



### Academic support

Throughout your degree, you will have access to a range of programs and opportunities to help you succeed at university. Most support is provided free of charge by the Student Success team and is delivered via workshops and individual appointments with a Learning Advisor on topics such as referencing and academic integrity, time management, assignment writing, critical reading, note-taking, understanding feedback from assessments and exam anxiety.



### English as an additional language support

If English is not your first language and you need additional assistance to manage your studies in English, you can make an appointment to see Learning Advisors skilled in assisting students with academic English.



### Mentoring program

As an international student, you'll be matched with an experienced student mentor who will meet with you regularly. Your mentor will share useful information and help you settle into university life in Australia. They'll guide you on how to access important services, find helpful resources and get involved in events – so you can make the most of your time at university.



### Access and inclusion

A variety of support is available for students with a temporary, episodic or permanent medical condition or disability which impacts their studies. Support options can include:

- Changes to examination conditions
- Equipment and assistive technology
- Alternative format study materials
- Tailored study skills support in conjunction with a Learning Advisor.



### Student wellbeing, safety and support

At Notre Dame, we are committed to the wellbeing, safety and support of all our students. Professional, confidential and holistic support is tailored to each student's individual needs.

In addition to one-on-one and group support, the University delivers education and awareness programs that foster a safe, healthy and respectful community.

# AND STUDENT LIFE

DISCOVER



## Student Life



### Student Associations

The University's Student Associations are at the centre of student life. The Student Associations represent and support all students and create engagement opportunities that contribute to the University's vibrant community.



### Clubs and societies

There are also numerous student clubs and societies offering opportunities for you to develop socially, culturally, professionally, spiritually and academically.



### Sports

Student Life supports and enables participation in a wide variety of sporting, social and cultural pursuits. You can get involved in social sporting competitions, or intervarsity events such as the UniSport Nationals.



# HOW TO APPLY

## International students

### We consider the whole person

The University of Notre Dame Australia uses a comprehensive application process that considers every applicant on an individual basis, making the admissions process — like the University study experience — focused on the individual person. There is no application fee.

Please note: a visa with study rights is required if you have been accepted to study full time on campus for more than three (3) months at an educational institution in Australia.

If you have any queries please contact Notre Dame's International Office: [international@nd.edu.au](mailto:international@nd.edu.au).



# 01

## Submit your application

You can apply to the University of Notre Dame Australia online at [notredame.edu.au/international/how-to-apply](https://notredame.edu.au/international/how-to-apply).

Alternatively, you can apply via one of the University's authorised education agents in your country. A list of registered education agents of the University can be found at [notredame.edu.au/international/agents](https://notredame.edu.au/international/agents).

**Please note:** An applicant seeking admission to study at the University of Notre Dame Australia on an Australian student visa must be at least 18 years of age at the start of the teaching period in which they will begin their studies.

# 02

## Receive your offer

Offers are made on a rolling basis. You will be notified of an offer via email along with your first semester invoice and other important information on accepting your offer and moving to Australia.

# 03

## Accept your offer

If you receive an offer from the University, you can choose to accept, defer or reject the offer.

You do this by completing the 'Conditions of Offer & Acceptance Form' provided in the offer email accompanied by your invoice payment.

Please call or email the International Office on +61 8 9433 0873 or [international@nd.edu.au](mailto:international@nd.edu.au) if you have any questions regarding your offer.

# 04

## Enrol

Once the International Office has received your indicative invoice payment, you will receive an electronic Confirmation of Enrolment which you will use to apply for your student visa (if applicable).

The International Office will then get in touch with you to organise your enrolment, including preparing for your move to Australia.

# 05

## Orientation

Orientation Week is a fun, festival-like event and is an opportunity to meet fellow students and get involved in student life at the University.

**Orientation Week is compulsory for international students studying on campus in Australia**, as it provides you with important information which will help set you up for success during your studies at the University.



# 2026

## Key dates

### Application deadlines

#### Semester 1 study

(Spring semester in the northern hemisphere – Feb–Jun)

- Nomination due from a partner university: 15 October of the previous year
- Application due date: 31 October of the previous year

#### Semester 2 study

(Fall semester in the northern hemisphere – Jul–Nov)

- Nomination due from a partner university: 15 March of the same year
- Application due date: 31 March of the same year

### Semester dates\*

#### Semester 1 Orientation Week

9–13 February

#### Semester 1 starts

16 February

#### Mid-semester break

6–10 April

#### Semester 1 exam period

1–13 June

#### Holiday break

15 June – 10 July

#### Semester 2 Orientation Week

13–17 July

#### Semester 2 starts

20 July

#### Mid-semester break

7–11 September

#### Semester 2 exam period

2–14 November



Please refer to **Notre Dame's academic calendar 2026** for more information and detail about Orientation and semester dates.

Also see **Calendars and timetables** for other helpful information.

\*Please note, some degrees have start dates which are different to those listed here. Please check with your school for details of non-standard start dates.

Please note, semester commencement dates for the Doctor of Medicine and Master of Physiotherapy degrees are earlier than the standard semester dates.

Master of Physiotherapy classes commence on 5 January 2026.

Classes for first-year students commencing the Doctor of Medicine (on both the Sydney and Perth Campuses) start in the week commencing 19 January 2026.

## Important Information

### Overseas Student Health Cover

The Australian Government requires international students to have adequate medical insurance or health cover from an Australian Health Fund. There are currently six providers approved by the Australian Government: Bupa Australia, AHM OSHC, Allianz Global Assistance, Medibank Private, CBHS International Health and NIB.

The University of Notre Dame Australia partners with Bupa Australia as our preferred provider. Bupa is Australia's largest healthcare provider. All new international students enrolled at the University will be covered by this provider, unless proof of other cover is provided. The costs of your Overseas Student Health Cover (OSHC) are invoiced to you for payment with your first year's fees before you arrive in Australia.

OSHC is effective from one week before Orientation Week and is valid for the length of your visa, so you will not need to worry about renewing your cover while you are studying. If you intend to arrive in Australia before the cover starts, please notify the International Office so that appropriate health cover can be arranged.

If you change or extend your study program, it is your responsibility to ensure that you remain covered as long as the length of your visa. If you do not have sufficient OSHC coverage, your visa could be cancelled and you will not be covered for any medical bills that you incur during the lapsed time.

For further information on OSHC please visit the Australian Government's Department of Health, Disability and Ageing: [www.privatehealth.gov.au/health\\_insurance/overseas/overseas\\_student\\_health\\_cover.htm](http://www.privatehealth.gov.au/health_insurance/overseas/overseas_student_health_cover.htm).

### Sydney Campus

Notre Dame's Schools of Arts & Sciences, Law & Business, Education, Philosophy & Theology, and Nursing & Midwifery are all based on our Broadway Campus in Chippendale. The School of Health Sciences is located on our Darlinghurst Campus. We encourage students to choose courses from one site only.

### Perth Campus

All Schools are located on our Perth Campus in Fremantle.

### Tuition fee

In 2026: fee for four courses (100 UNDA Credit Points) is AU\$9,125.60 and five courses (125 UNDA Credit Points) is AU\$11,407.\*

#### FEE DISCLAIMER

The Study Abroad fee covers tuition fees and one official academic transcript on completion of your studies at Notre Dame.

\*Indicative fees for 2026.

### The University of Notre Dame Australia Credit Point System

We recommend the following credit conversion as a guide, however, your home university has the right to determine and translate credits as they deem appropriate.

The University of Notre Dame Australia Credit Points	US Credits	European ECTS	UK Credits	Asia Credits
25 UNDA credit points (1 course/class/module)	4	7.5	15	4
75 UNDA credit points (3 courses/classes/modules)	12	22.5	45	12
100 UNDA credit points (4 courses/classes/modules)	15	30	60	15



**DISCLAIMER**

The information contained in this publication was correct at the time of publication as at September 2025. The University reserves the rights to make changes to any material or content contained in this publication from time to time without notice. Whilst every effort will be made to ensure that the information is accurate and up to date, there is no guarantee or representation express or implied given as to the accuracy or currency of the content of any individual item. Persons accessing the publication who require confirmation of any information should contact the University of Notre Dame Australia International Office.

The University reserves the right at all times to vary programs and courses or any arrangements in relation to programs and courses listed in the publication at any time. The variations may include fees, withdrawals, the contents, methods of assessment of any courses, programs, course and program offerings, enrolment requisites, locations of course/program offerings and any other arrangements pertaining to courses and programs.

The University does not accept responsibility for any loss or damage occasioned by use or reliance of the information contained in the publication nor from any access to the website. While the University will make every effort to ensure the availability and integrity of its information technology resources, it cannot guarantee that these will always be available, and/or free of any defects, including viruses. All access and use is at the risk of the user.

Any hypertext links provided by the University in this publication to other websites or websites are provided as a service to users. This service does not mean that the University endorses those sites for the material in any manner.

ESOS: The University in providing education services to overseas students complies with The *Education Services for Overseas Students Act 2000* (ESOS Act) and the National Code of Practice for Providers of Education and Training to Overseas Students 2018 (The National Code) that is the governing legislative and regulatory framework as amended from time to time.

The University is a registered provider under the Commonwealth Register of Institutions and Courses for Overseas Students (CRICOS). Provider Number 01032F.

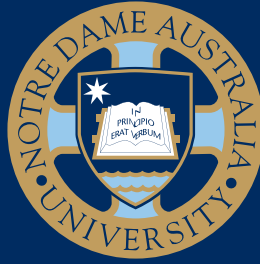
International students studying in Australia on a student visa can only study full time and there are also specific entry requirements which must be met. If information contained in this publication may not be applicable to international students, refer to [notredame.edu.au/international/study-at-notre-dame-australia](https://www.notredame.edu.au/international/study-at-notre-dame-australia) for further information. Australian citizens, Australian permanent residents, and international students studying outside of Australia have the choice of full-time, part-time and external study, depending on course availability.



“The best aspects of studying here are the support and practical experience.”

Annie

Education student from Vietnam



**5-Star Ratings\***



**Learner Engagement  
Skills Development  
Graduate Salary  
Full-Time Employment**

\*Good Universities Guide 2025, undergraduate and postgraduate categories

**Notre Dame University's International Office**

Contact us at [studyabroad@nd.edu.au](mailto:studyabroad@nd.edu.au)

[notredame.edu.au/study/international-students/semester-abroad-at-unda](https://notredame.edu.au/study/international-students/semester-abroad-at-unda)

ND6886 | CRICOS: 01032F

© 2025 The University of Notre Dame Australia, all rights reserved.

Join our online community



@notredamesyd

@notredameaustralia